

Elkhart Public Library

YPS Feasibility Study 2024

July 3, 2024



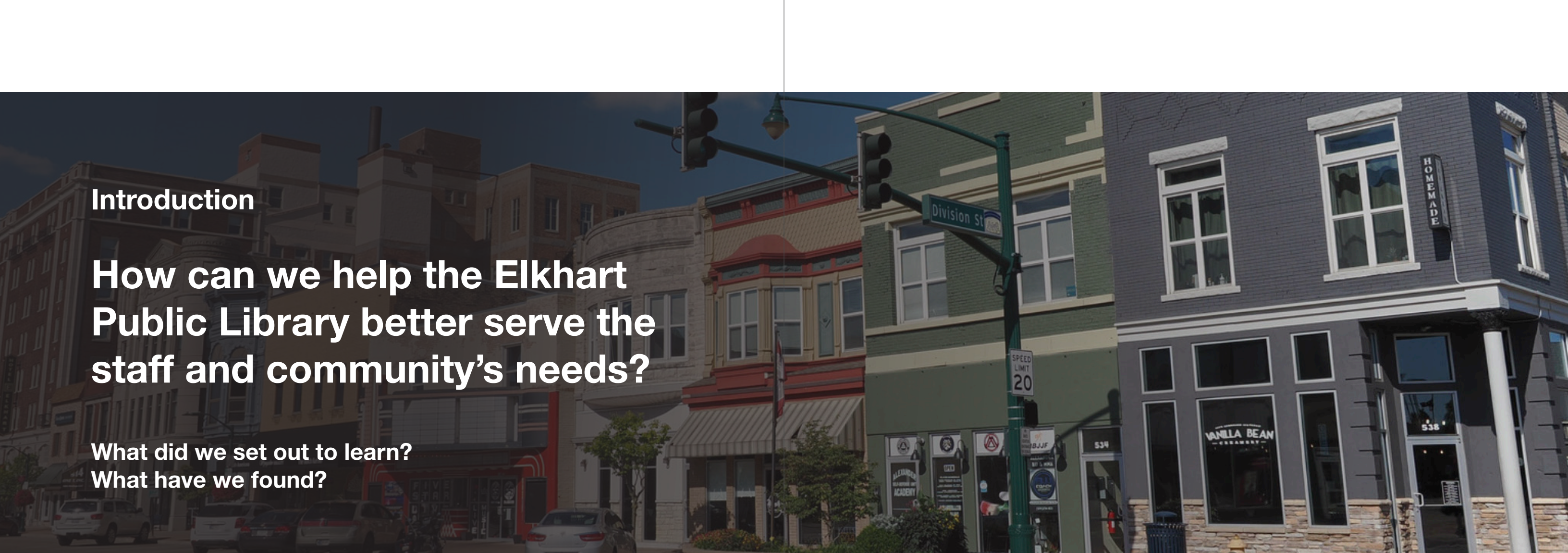
Table of Contents

1 - Summary & Process	
Introduction	06
Process	08
Project Timeline	10
2 - Aspirations & Goals	
Project Aspirations - Priorities + Wish List	14
Project Goals	16
Existing Floor Plan Analysis	18
Ted Drake Mural	20
3 - Design Concept Option A	
Floor Plans - Renovation	24
Interior Design Concept Rendering	26
Cost Estimate	28
4 - Design Concept Option B	
Floor Plans - Renovation + One Story Addition	32
Interior Design Concept Rendering	34
Building Massing Concept	36
Cost Estimate	40
5 - Design Concept Option C	
Floor Plans - Renovation + Two Story Addition	44
Interior Design Concept Rendering	46
Building Massing Concept	48
Cost Estimate	52
6 - Appendix	
Matterport Technology	56
Early Considerations and Initial Assessments	58
Kick-off Meeting Notes	62
YPS Staff Meeting Notes	64
Community Engagement & Staff Visioning Workshops	66
YPS Community Input Survey Summary	86
Teen Input Survey Summary	88

ELECTRONIC VIEWING:

This document may be best viewed using Adobe Reader in the ‘two pages per view’ mode.

SUMMARY & PROCESS



Introduction

How can we help the Elkhart Public Library better serve the staff and community’s needs?

What did we set out to learn?
What have we found?

Project Participants

Elkhart Public Library Staff

Lisa Guedea Carreno, Executive Director
Mary Beth Schlabach, Director of Public Service
Allison McLean, Supervisor of YPS
John Dawson, Sr. Business Operations Manager
Trevor Wendzonka, Chief Marketing Officer

Elkhart Public Library Board Members

James W. Rieckhoff, President
Jeri Stahr, Vice President
Laura Steffen, Secretary
Jennifer Nielsen, Member
Janet Gruwell, Member
Cynthia Dunlop, Member
Yuliana Rivera Arce, Member

krM Architecture

Stuart Godfrey, AIA
Andrew Jackson, AIA
Emma Wynn

Executive Summary

Several months of research, investigation, and meetings with various stakeholder groups were undertaken to answer the question of what is next for the Young People’s Services area of the downtown Elkhart Public Library. The result of this inquiry is the development of this YPS Feasibility Study. This book is formatted to be a working tool that provides guidelines for the implementation of facility changes for the library.

The project goals aim to enhance the functionality, accessibility, and overall experience of the YPS area, ensuring it meets the needs of children, teens, and their families while fostering a love for reading and learning. The vision is to create a space that not only meets the current needs of children and teens but also becomes a lasting and vibrant asset for the Elkhart community.

Interior Renovation

OPTION A	PROJECT ESTIMATE RANGE	\$	1,733,101.17	to	\$	2,142,406.72
-----------------	------------------------	----	--------------	----	----	--------------

Interior Renovation + One-Story Addition

OPTION B	PROJECT ESTIMATE RANGE	\$	4,707,285.90	to	\$	5,579,496.54
-----------------	------------------------	----	--------------	----	----	--------------

Interior Renovation + Two Story Addition

OPTION C	PROJECT ESTIMATE RANGE	\$	8,288,681.96	to	\$	9,907,188.62
-----------------	------------------------	----	--------------	----	----	--------------

PROCESS

Evaluation Phase

Before delving into the broader needs assessment, it was crucial to conduct an initial evaluation of the existing building and site. This involved a comprehensive review of the current architectural and site conditions. Our team assessed the building’s structural integrity, spatial layout, and adherence to current safety codes. Simultaneously, we analyzed the surrounding site, considering factors such as accessibility, landscaping, and potential for expansion or reconfiguration. krM conducted an on-site assessment of the existing facilities and developed background drawings for the development of the feasibility study. This effort included the use of a Matterport scanner to create a three-dimensional tool for assessing existing conditions quickly and remotely.

Discovery Phase

The process began with a comprehensive project kickoff meeting involving key stakeholders from the Elkhart Public Library and the krM team. This meeting established project goals, timelines, and communication protocols, ensuring alignment on the vision and objectives, fostering a collaborative foundation for the study. Library staff were engaged in one-on-one and small group meetings to understand the priority of needs and wish list items for the reimagined YPS area. Our team immersed ourselves in understanding the unique dynamics of the Elkhart Public Library’s Downtown Children’s and Teen Spaces. We discussed ways that expansion opportunities would impact departments outside of the YPS area and analyzed current usage patterns. This step provided a comprehensive overview of existing strengths, weaknesses, opportunities, and threats.

Community Engagement & Staff Visioning Workshops

The design team facilitated a series of engagement opportunities and collaborative visioning workshops. These interactive sessions engaged key stakeholders, like parents and young people who are library patrons, to envision the future of Downtown Children’s and Teen Spaces. Through brainstorming and ideation exercises, we defined

the desired user experience, programming goals, and overall atmosphere of the renovated spaces. Most of these interactive activities centered around the library’s Easter Egg Hunt event held at the downtown library on March 28. The event was well-attended, and a variety of input was solicited and responded to. A summary of these activities and responses is included in the appendix of this study report.

Conceptual Design

Armed with the insights from the needs assessment and the visioning workshop, our design team developed conceptual designs and space plans. These explore various layout options, furniture arrangements, and potential design elements. It should be noted that the use of natural materials, neutral colors, and natural light is an important aspect of creating timeless designs. The goal is to create a flexible and dynamic space that accommodates diverse activities, encourages collaboration, and adapts to the evolving needs of children and teens. The process was iterative, collaborative, and responsive to the evolving needs and aspirations of the Elkhart community.

Final Report

Based on the refined designs and stakeholder feedback, we have developed a comprehensive final feasibility report. This report includes detailed recommendations, budget estimates, and a phased implementation roadmap. It outlines the steps needed to bring the vision to life, considering both short-term improvements and long-term sustainability.

FORWARD-THINKING DESIGN

Going beyond the common needs and trends for library design such as technology integration, flexible furniture, and big growth in programming and teen spaces, krM is researching and implementing larger design philosophies within public libraries. Rather than responding only to the initiatives they face now, we anticipate and plan for impactful changes in the public library’s future. It’s important that design decisions are made with distinction between lasting changes and fleeting trends. We are excited about 5 of these initiatives which may be important to the patrons of the Elkhart Public Library.

1



**PLIABLE
INFRASTRUCTURE**

Weekly or daily flexibility needs can be addressed largely through furniture options. However, planning for light renovations, that occur in 5 or 10 years (which make your building more adaptable to your services) is the goal of pliable infrastructure. Overall planning is critical to setting up zones in the building that have this flexibility. This should be coupled with high intentionality regarding things like the MEP systems and finishes that allow for adaptations.

2



**PRIVACY
HIERARCHY**

With the continued openness and flexibility comes increased demand for privacy. A library could never build enough study rooms if they relied on this approach alone. Overlaying privacy zones in the planning process will inform travel and usage planning and be followed by details like ceiling, lighting and furniture planning. These semi private spaces can help accommodate the increasing demand but still build on the overall concepts of openness.

3



**AUTHENTIC
ENGAGEMENT**

The design landscape is packed with options and new trends. Finding the identity of the library and community not only currently but where it wants to go, allows us to match a design to it. Whether it is local art, history or resources, we look to build stories into the design and give strong purpose to the spaces.

4



BIOPHILIA

Natural light and views are building blocks of great spaces, we are expanding this integration of the exterior into our library spaces and it is a driver in early planning. This has countless benefits and will always be the most popular spaces within the building.

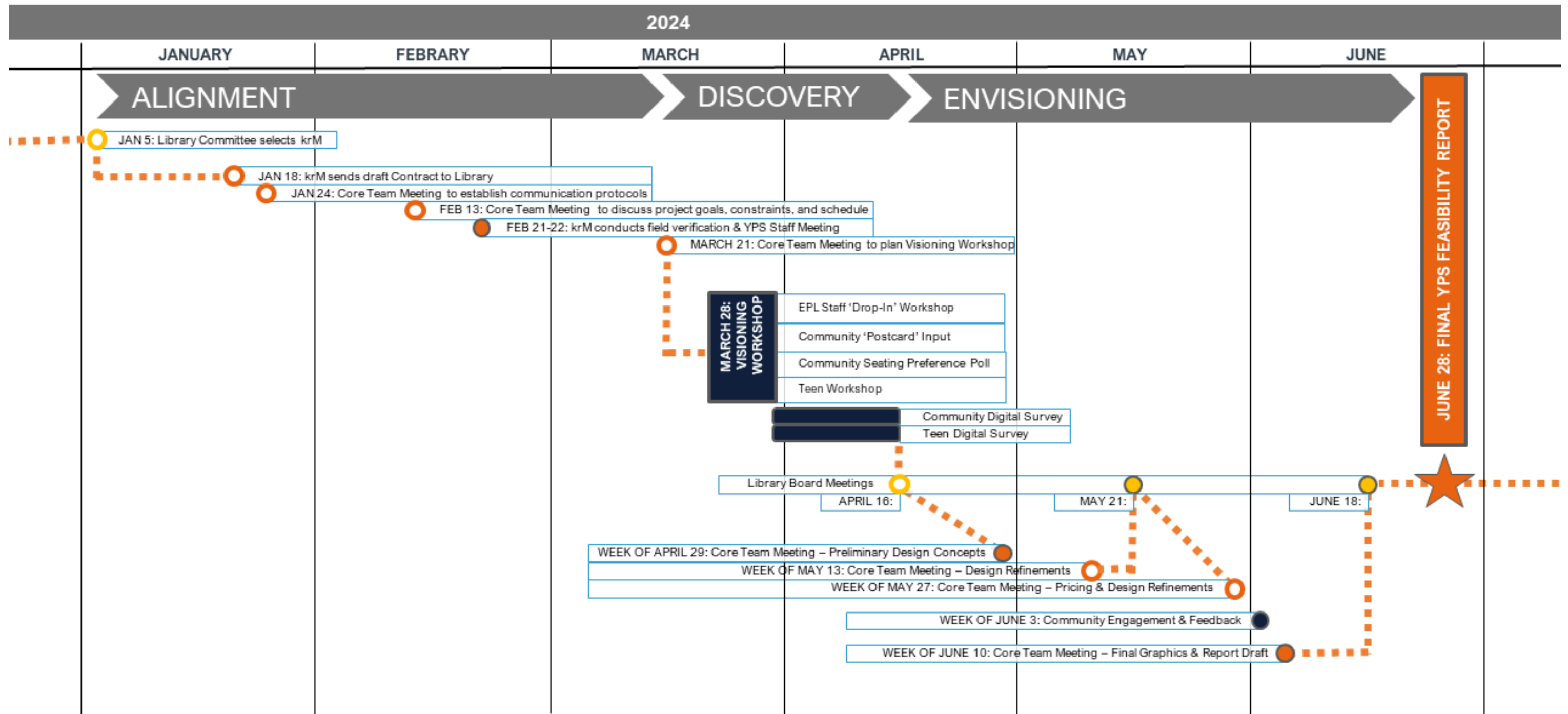
5



**MOBILITY &
ADAPTABILITY**

With the evolution of the furniture industry and technology growth, we have the ability to create spaces that are more timeless, long-lasting, flexible, mobile, and adaptable. Furniture offerings provide a sense of place and inclusivity.

PROJECT TIMELINE YPS FEASIBILITY STUDY



Timeline

The library's goal was to complete the YPS feasibility study in conjunction with potential funding source applications, particularly the Ready 2.0 grant, specifically for capital improvements. Regions will be allocated in Q2 of 2024. The earliest date for application for those funds is early Q3. A project schedule was developed to match the Owner's pace of decision-making and consideration. A detailed schedule is included in the study.

ASPIRATIONS & GOALS



PROJECT ASPIRATIONS

What are the most crucial items or areas for young people in the library that could be improved?

What are some additional wish list items?

Priorities

- More enclosed and welcoming teen area
- Children's interactive / play area- near the desk
- Improve service desk in children's area to include storage
- Integration of computer stations within the YPS area
- Family restrooms
- Improved staff office and work space

Wish List

- Programming area (i.e. STEAM Exploration Area from Carmel Library)
- Incorporate tutor service area into the main floor YPS area
- A wider variety of seating (nooks, quiet reading spaces, etc.)
- Stroller parking and soft-seating near restrooms and / or near entrance (i.e. St. Joe Library)
- Distinct activity spaces for various age groups
- One desk that is accessible to children's and teen's area
- Teen Area to include storage for activities, games, and supplies
- Outdoor programming space for YPS & potential other departments and / or community members - rooftop potential

PROJECT GOALS

1. Develop an Enclosed and Multifunctional Teen Area

Create a dedicated, welcoming space for teens that includes secure storage for activities, games, and supplies.

- Features:
- Enclosed area with soundproofing to ensure privacy and minimize noise
 - Shelving and cabinets for organized storage
 - Comfortable and flexible seating arrangements
 - Interactive technology and gaming stations

2. Design Interactive and Imaginative Play Areas for Toddlers and Preschoolers

Provide engaging and developmentally appropriate play areas that foster creativity and learning for young children.

- Features:
- Safe, soft flooring and furniture
 - Interactive play structures and sensory activities
 - Themed play zones that encourage imaginative play
 - Parent seating areas nearby for supervision

3. Upgrade the YPS Service Desk with Enhanced Accessibility and Secure Storage

Improve the service desk to be more user-friendly for both staff and patrons, ensuring accessible, organized, and secure storage.

- Features:
- Ergonomically designed desk with ADA compliance
 - Secure storage for important documents and materials
 - Technology integration for efficient service delivery
 - Visibility and accessibility to patrons from both children’s and teen’s areas

4. Incorporate Flexible and Varied Seating Options Across the YPS Area

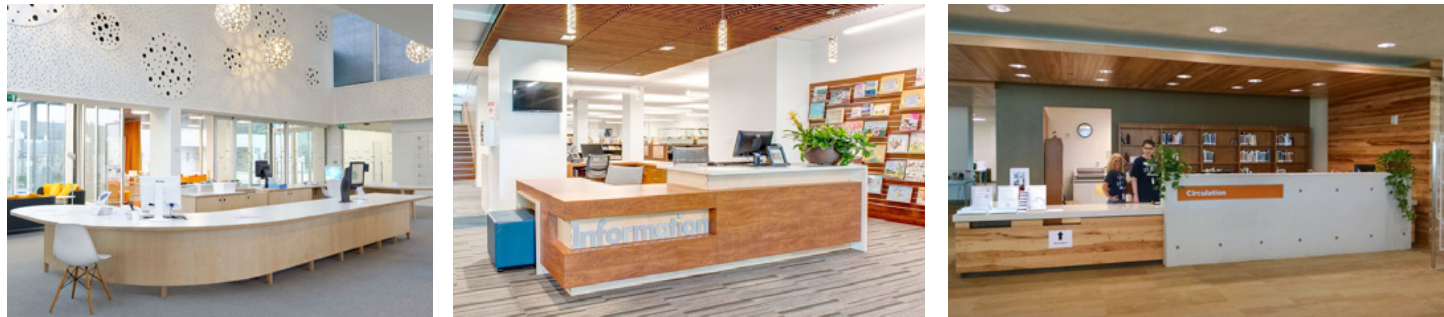
Provide a range of seating solutions to accommodate different activities and preferences for children, teens, and parents.

- Features:
- Reading nooks and quiet spaces for individual reading
 - Comfortable lounge seating for relaxation and socialization
 - Study tables and chairs for homework and group work
 - Soft seating and stroller parking near restrooms and the YPS entrance

5. Create a Unified and Functional Outdoor Programming Space

Develop an outdoor area that is versatile for various programming needs, accessible to all patrons, and seamlessly integrated with the YPS indoor spaces.

- Features:
- Flexible seating and table arrangements for different events
 - Shaded areas and weather-resistant materials
 - Safe, child-friendly landscaping and play features
 - Connectivity to indoor YPS areas for smooth transition and usage



EXISTING FLOOR PLAN ANALYSIS

Analyzing an existing 1960s-era library is essential to ensure it meets contemporary needs and embraces modern design principles. This assessment focuses on patron circulation, daylighting, views, and underutilized building areas, key factors in transforming the library into a vibrant, functional, and inviting space.

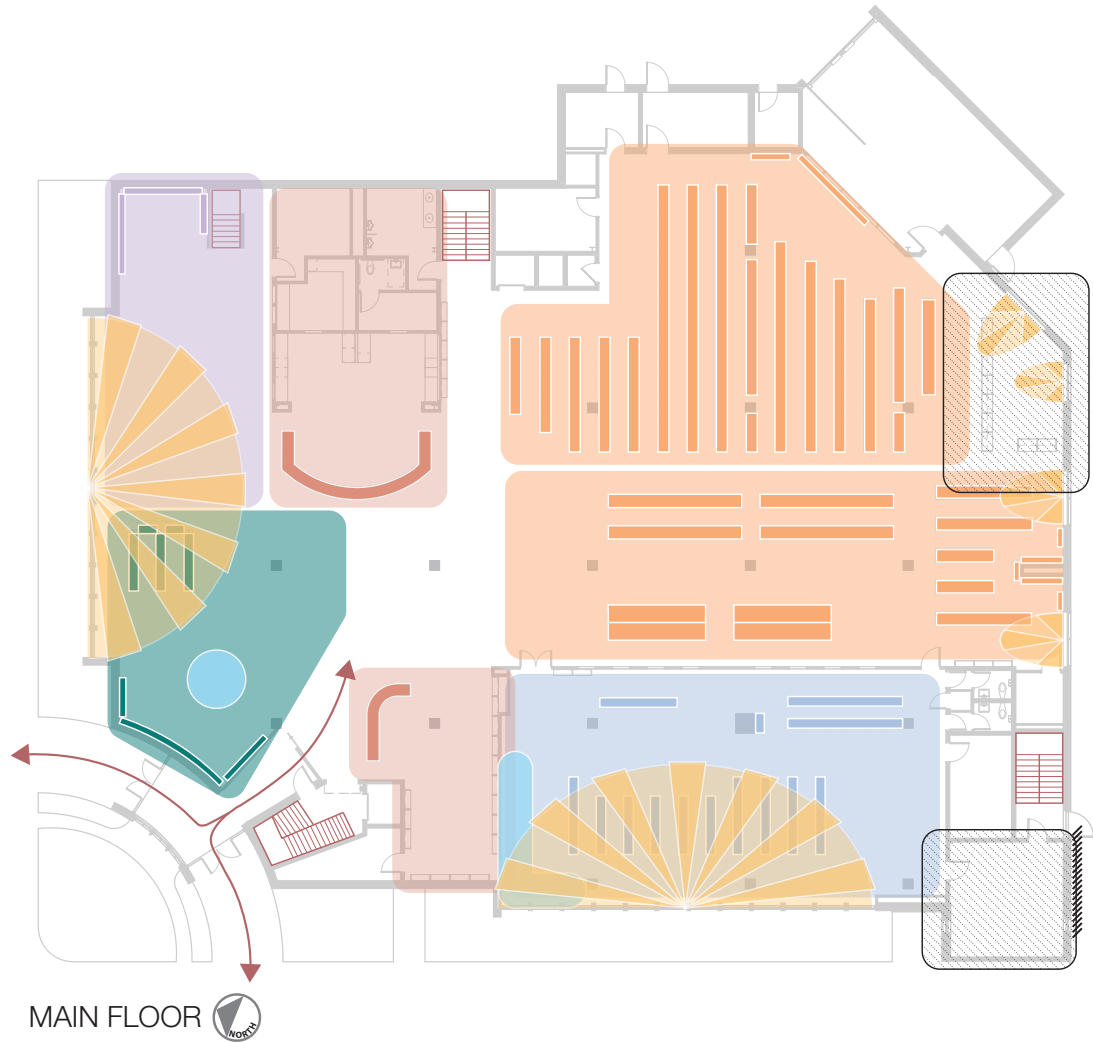
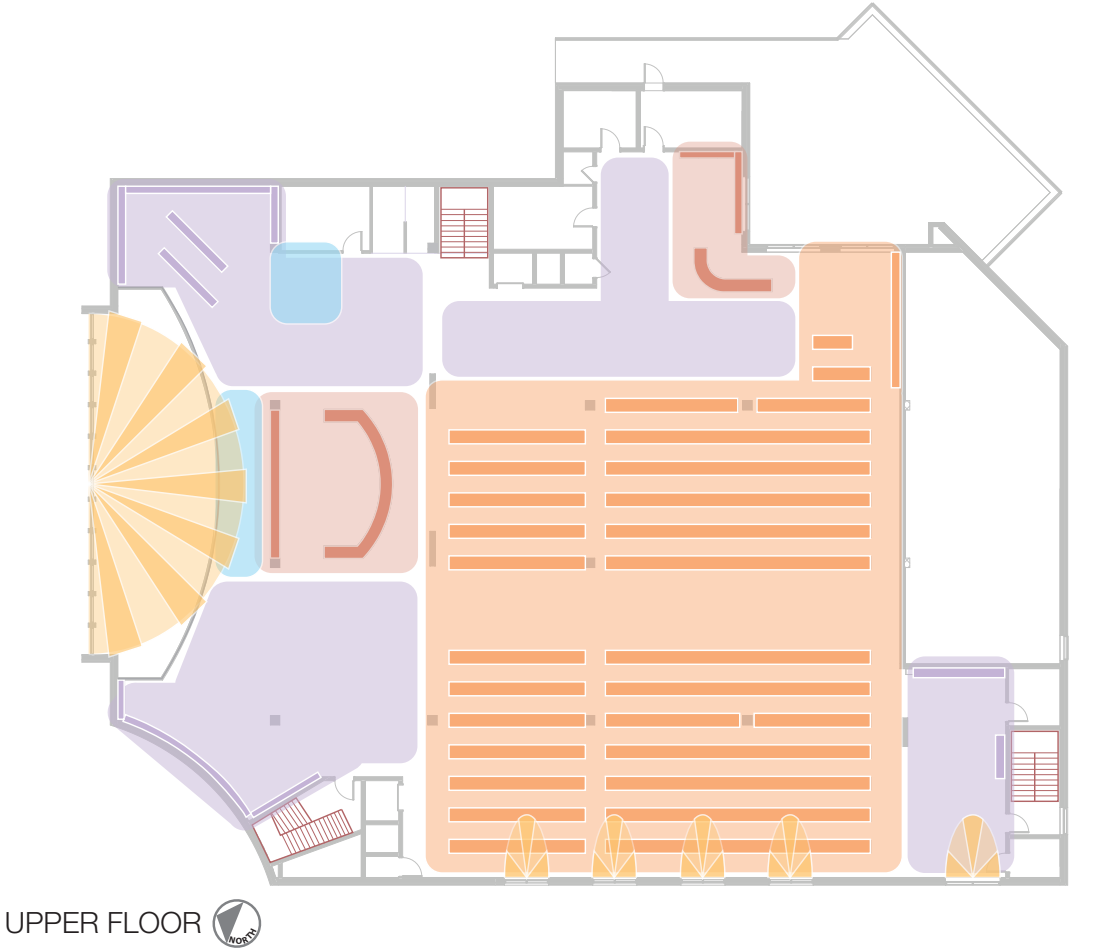
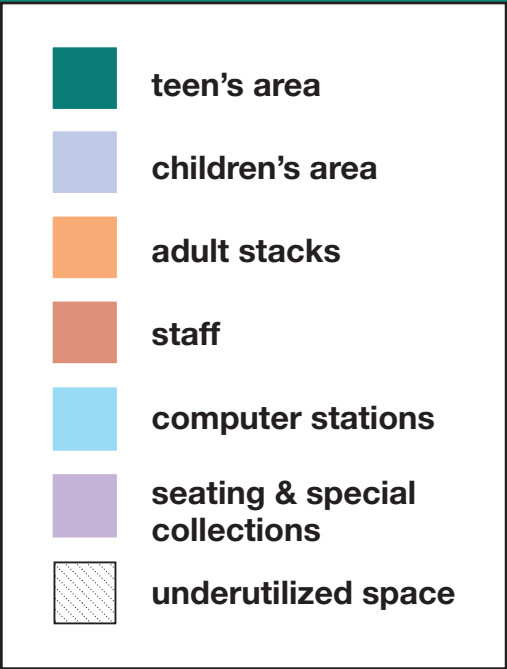
Patron circulation is critical in understanding how users navigate the library. Evaluating current circulation patterns will identify bottlenecks and areas where movement is restricted. Enhancing the flow through intuitive wayfinding, broader pathways, and strategically placed service points can significantly improve user experience, making the library more accessible and enjoyable.

Daylighting is another focal point. Many 1960s-era libraries rely heavily on artificial lighting due to smaller windows and less consideration for natural light. Assessing the potential for increased daylighting involves examining window placement, size, and the overall building orientation. Introducing larger windows, skylights, or light wells can reduce

energy consumption and create a more pleasant and stimulating environment. Natural light positively impacts mood and productivity, making it a vital component of modern library design.

Views, both internal and external, play a significant role in user satisfaction. Libraries from the 1960s often have limited visual connections between different areas and to the outdoors. Analyzing existing views helps identify opportunities to open sightlines within the library, enhancing spatial awareness and connectivity. Expanding views to the outside can provide a sense of openness and connection to the surrounding community, enriching the overall ambiance.

Finally, examining underutilized building areas is crucial for optimizing space. As libraries evolve and collections and program spaces change, some areas can be repurposed for modern needs. Identifying these areas enables the incorporation of new functions such as collaborative workspaces, digital media zones, or community meeting rooms, aligning the library with contemporary demands.



TED DRAKE MURAL

An early design consideration involved the preservation of the Ted Drake mural. When it was originally painted in 1960, the mural was in the former children's entrance. The mural could easily be seen from outside and when walking into the library. However, the vestibule was eventually built out and now the mural is in a staff workroom area off the children's area, completely shielded from the public.

The design intent was to return the mural to public view and modify the former children's entrance to incorporate daylighting back into the space. Rethinking how this space could be seen and utilized by the public daily became significant considerations in the study.



DESIGN CONCEPT OPTION A

OPTION A

Concept

The design concept for the Elkhart Public Library reimagines the existing space to enhance the Young People’s Services (YPS) area without any physical addition to the building. This approach focuses on optimizing the current layout to meet the most critical needs identified by YPS staff and the community.

The existing YPS area will be expanded into the adult section on the main floor, specifically displacing the adult Music Collection and utilizing an underutilized portion of the library (used for curb-side service delivery during Covid). This reconfiguration will allow for the creation of a dedicated interactive play space for toddlers and preschoolers, fostering creativity and early learning within a safe environment. The expanded YPS area will also feature multiple tutoring and study spaces, providing essential support for structured educational activities and self-directed learning.

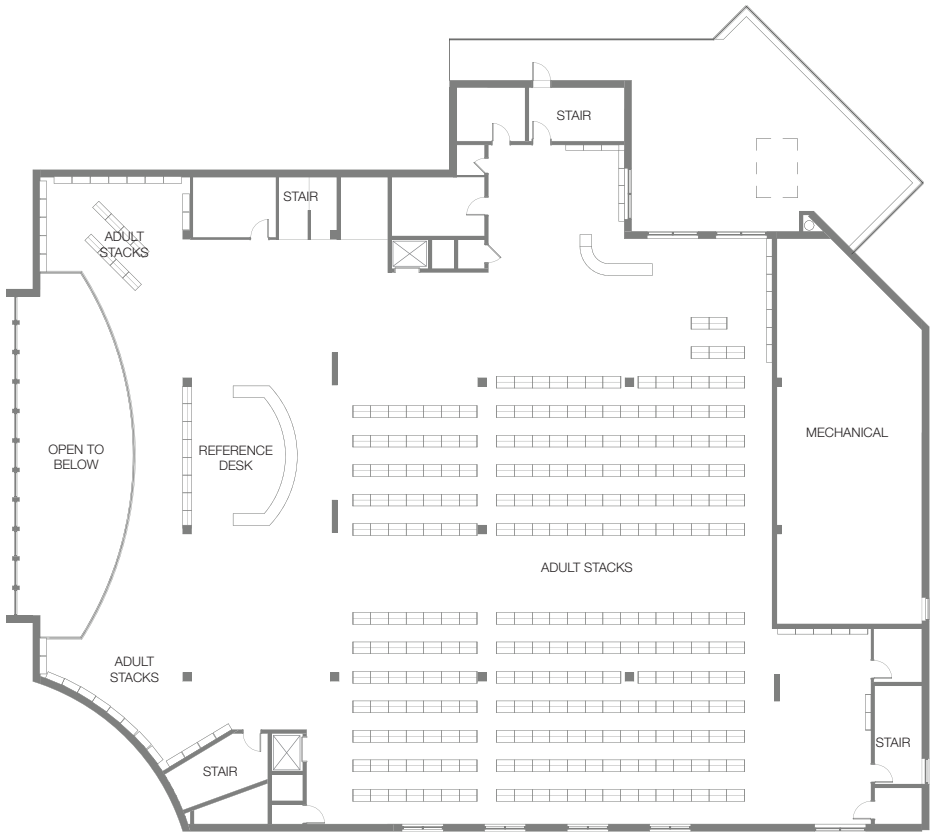
NO ADDITION

RENOVATED AREA 7,200 SF

To accommodate diverse patron needs, a variety of seating options will be incorporated, including cozy reading nooks, quiet study zones, and comfortable lounge seating. A dedicated teen room will offer a secure and engaging space for teenagers, equipped with storage for activities, games, and supplies. Family restrooms will be conveniently located within the expanded area, ensuring accessibility for all patrons.

While this reconfiguration effectively addresses the YPS’s current needs, it does not accommodate the wish list items due to space constraints. Despite these limitations, the design ensures a dynamic and functional space that supports the educational and recreational needs of children, teens, and their families, fostering a love of reading and learning within the library’s available footprint.

Estimated Cost Range \$1,750,000 - \$2,150,000



UPPER FLOOR



LOWER FLOOR



MAIN FLOOR



INTERIOR DESIGN CONCEPT RENDERING

COST ESTIMATE

Purpose and Limitation of the Cost Estimates

These cost estimates are intended to provide magnitude of costs to assist the Elkhart Public Library in their assessment of the viability for various project options. The estimates were developed using a cost per square foot method in 2024 U.S. dollars.

Project owners and contractors face threats of higher prices and longer lead times at the outset of projects, but also uncertainty regarding pricing and scheduling impacts throughout construction. We will be proactive in our attempts to anticipate these issues and make decisions in the best interest of the project. However, we acknowledge that there are many factors outside of our control, in this regard. As EPL narrows their choices and priorities, each potential project option should be evaluated in more detail to validate the cost estimates.

As part of this plan, various design and reconfiguration ideas were considered. These preliminary concepts are intended to identify the potential changes in enough detail to establish general project scope and an estimate of the potential cost impact. While some details have not been fully resolved, as part of this plan, the issues have been identified and included in the estimate for future development during a design phase.

Standard Level of Renovation

In areas proposed to be renovated, the general standard is to bring an area to a “like new” condition. Within existing buildings, it is common for some constraints to hamper a totally new condition. However, in most cases, ‘like new’ is achievable and provides a satisfactory educational and overall building environment.

Building Code Compliance

Building codes have evolved significantly over the last 50 years and have become increasingly strict in their requirements for the life safety of occupants. If a building is constructed properly to meet the current building code, there is no requirement that the building is to be improved to current building codes. The exception is that if the local fire or building inspection officials deem that a situation is unsafe, they may require an owner to make specified upgrades.

If a building is renovated, it is required to meet varying levels of building codes depending on the work being completed. The International Existing Building Code classifies remodeling in one of three categories. This code becomes the baseline of minimal standard for remodeling or renovation of existing buildings. This is the standard to which this feasibility study is intended to be held.

ELKHART PUBLIC LIBRARY Downtown Branch - YPS Area				
FEASIBILITY STUDY COST ESTIMATE PREPARED 6/18/2024 OPTION A				
SCOPE DESCRIPTION	QNTY	UNIT	UNIT COST	TOTAL
Building Addition: 1 Story	-	SF	\$ -	\$ -
Interior Renovation: Reconfiguration + Finish Upgrades	7,200	SF	\$ 150.00	\$ 1,080,000.00
Exterior Improvement: Rooftop Patio	-	SF	\$ 75.00	\$ -
Exterior Improvement: Window Replacement (Existing 1st floor YPS)	450	SF	\$ 95.00	\$ 42,750.00
Sitework: Excavation and Grading for New Construction	-	SF	\$ 25.00	\$ -
Sitework: Miscellaneous Walks, Stoops, and Lawn	-	AL	\$ 80,000.00	\$ -
Sitework: Development of Outdoor Program Room	-	SF	\$ 75.00	\$ -
				\$ 1,122,750.00
		General Conditions	15.00%	\$ 168,412.50
		Subtotal		\$ 1,291,162.50
		Contractor Overhead & Profit	15.00%	\$ 193,674.38
		Subtotal		\$ 1,484,836.88
		Contractor Payment & Performance Bond	1.50%	\$ 22,272.55
		Subtotal		\$ 1,507,109.43
		Design Contingency	10.00%	\$ 150,710.94
		Construction Cost Total		\$ 1,657,820.37
Soft Costs (design fees, planning permits, financing, legal fees, etc.)			10.00%	\$ 165,782.04
Reimbursable Expenses (printing, supplies, travel expenses, etc.)	1	AL	\$10,000.00	\$ 10,000.00
Owner Contingency			10.00%	\$ 83,983.68
Furnishings (new area only)	0	SF	\$30.00	\$ -
Furnishings (existing area only)	7,200	SF	\$30.00	\$ 216,000.00
Interactive Exhibits	1	AL	\$5,000.00	\$ 5,000.00
		TOTAL PROJECT ESTIMATE		\$ 2,138,586.09
OPTION A PROJECT ESTIMATE RANGE	\$ 1,733,101.17	to	\$ 2,142,406.72	
NO Building Addition:	\$0.00	\$/SF		\$0.00
Interior Renovation: Finish Upgrades	\$115.00	\$/SF		\$150.00

DESIGN CONCEPT OPTION B

OPTION B

ONE STORY ADDITION
4,000 SF

RENOVATED AREA
5,700 SF

Concept

The design concept for the Elkhart Public Library proposes a strategic 4,500 square foot one-story addition, enhancing the Young People's Services (YPS) area while maintaining the library's overall balance. This addition allows the existing YPS space to expand into the main floor, displacing only the adult Music Collection and occupying an underutilized area of the library (used for curb-side service delivery during Covid). This approach minimizes disruption and focuses on improvements where they are most needed.

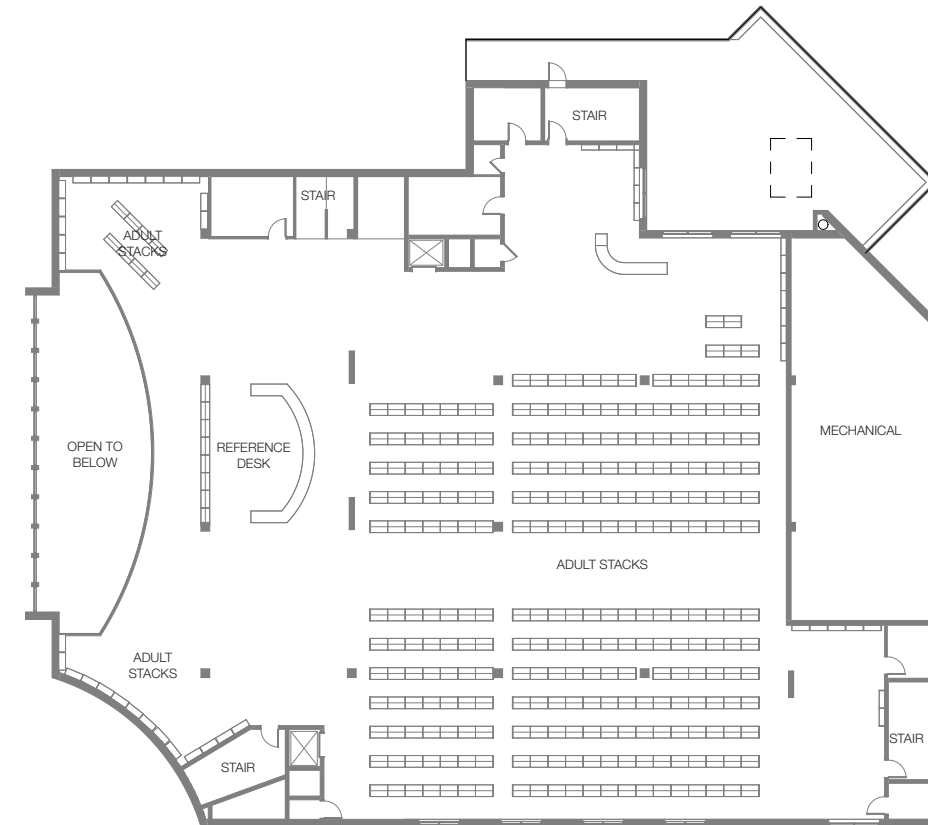
The expanded YPS area will feature a dedicated interactive play space for toddlers and preschoolers, fostering creativity and early learning. Multiple tutoring and study spaces will be integrated to support structured educational activities and self-directed learning. A variety of seating options will cater to different preferences, including cozy reading nooks,

quiet study zones, and comfortable lounge seating. A dedicated teen room will provide a safe and engaging environment for teenagers, equipped with secure storage for activities, games, and supplies. Family restrooms will be conveniently located within the expanded area.

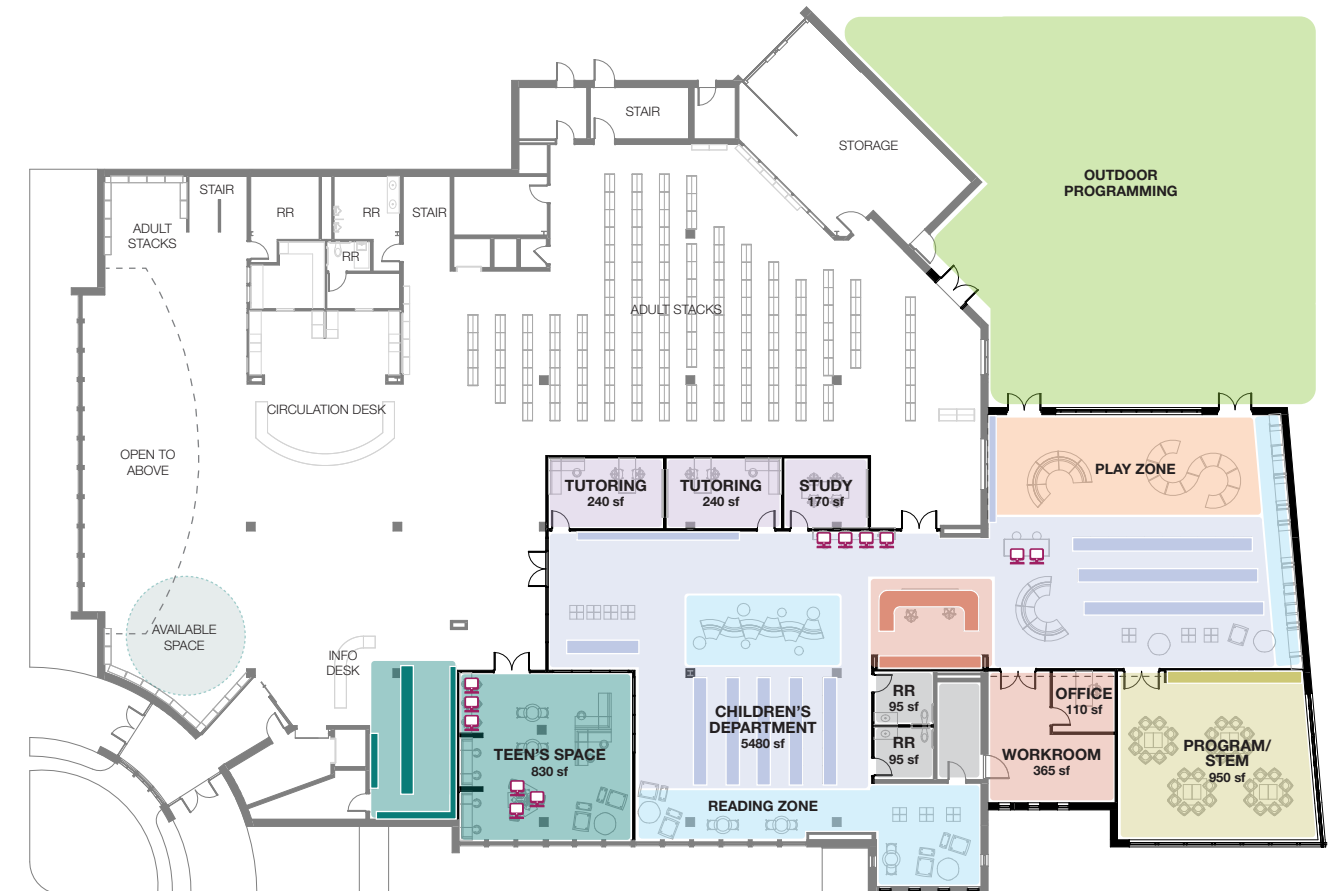
This one-story addition and reconfiguration thoughtfully address the priority needs and a few of the wish list items identified by YPS staff and the community. The design ensures a dynamic and adaptable space that supports educational, recreational, and cultural opportunities, fostering a love of reading and learning for children, teens, and their families.

Estimated Cost Range

\$4,700,000 - \$5,600,000

UPPER FLOOR 

LOWER FLOOR 



MAIN FLOOR 



INTERIOR DESIGN CONCEPT RENDERING

CONCEPTUAL MASSING

ONE-STORY ADDITION

Concept
The conceptual massing images serve as an essential tool in the study of a potential building addition. Their primary purpose is to visualize the scale and spatial relationship of the proposed addition to the existing library and its surrounding environment. By focusing on the overall form and volume, these images help stakeholders understand how the new structure will fit within the context of the site. This approach allows for exploring design possibilities without being constrained by specifics. It facilitates discussions about the building's impact on sunlight, shadows, and sightlines, ensuring the

addition complements the existing structure and its environment, and meets zoning and regulatory requirements, setting the stage for detailed design in subsequent phases.

The one-story addition allows for taller ceilings than those in the existing library areas, enhancing the sense of space and openness. The rooftop could be utilized for hosting HVAC equipment and optimizing interior space. Additionally, the location of the addition creates a new boundary, facilitating the establishment of an outdoor learning space.



View of Outdoor Program Area



2nd Street View

EXTERIOR PRECEDENTS



Indianapolis Public Library Glendale Branch | krM Architecture



Morgan County Public Library | krM Architecture



Meaford Public Library | LGA Architectural Partners



Indianapolis Public Library Glendale Branch | krM Architecture



CABQ International District Library | RMKM Architecture

Purpose and Limitation of the Cost Estimates

These cost estimates are intended to provide magnitude of costs to assist the Elkhart Public Library in their assessment of the viability for various project options. The estimates were developed using a cost per square foot method in 2024 U.S. dollars.

These cost estimates are intended to provide magnitude of costs to assist the Elkhart Public Library in their assessment of the viability for various project options. The estimates were developed using a cost per square foot method in 2024 U.S. dollars.

Project owners and contractors face threats of higher prices and longer lead times at the outset of projects, but also uncertainty regarding pricing and scheduling impacts throughout construction. We will be proactive in our attempts to anticipate these issues and make decisions in the best interest of the project. However, we acknowledge that there are many factors outside of our control, in this regard. As EPL narrows their choices and priorities, each potential project option should be evaluated in more detail to validate the cost estimates.

As part of this plan, various design and reconfiguration ideas were considered. These preliminary concepts are intended to identify the potential changes in enough detail to establish general project scope and an estimate of the potential cost impact. While some details have not been fully resolved, as part of this plan, the issues have been identified and included in the estimate for future development during a design phase.

Standard Level of Renovation

In areas proposed to be renovated, the general standard is to bring an area to a “like new” condition. Within existing buildings, it is common for some constraints to hamper a totally new condition. However, in most cases ‘like new’ is achievable and provides a satisfactory education and overall building environment.

Building Code Compliance

Building codes have evolved significantly over the last 50 years and have become increasingly strict in their requirements for the life safety of occupants. If a building is constructed properly to meet the then current building code, there is no requirement that the building is to be improved to current building codes. The exception is that if the local fire or building inspection officials deem that a situation is unsafe, they may require an owner to make specified upgrades.

If a building is renovated, it is required to meet varying levels of building codes depending on the work being completed. The International Existing Building Code classifies remodeling in one of three categories. This code becomes the baseline of minimal standard for remodeling or renovation of existing buildings. This is the standard to which this feasibility study is intended to be held.

ELKHART PUBLIC LIBRARY Downtown Branch - YPS Area				
FEASIBILITY STUDY COST ESTIMATE PREPARED 6/18/2024 OPTION B				
SCOPE DESCRIPTION	QNTY	UNIT	UNIT COST	TOTAL
Building Addition: 1 Story	4,500	SF	\$ 450.00	\$ 2,025,000.00
Interior Renovation: Reconfiguration + Finish Upgrades	5,700	SF	\$ 150.00	\$ 855,000.00
Exterior Improvement: Rooftop Patio	-	SF	\$ 75.00	\$ -
Exterior Improvement: Window Replacement (Existing 1st floor YPS)	450	SF	\$ 95.00	\$ 42,750.00
Sitework: Excavation and Grading for New Construction	10,400	SF	\$ 25.00	\$ 260,000.00
Sitework: Miscellaneous Walks, Stoops, and Lawn	1	AL	\$ 80,000.00	\$ 80,000.00
Sitework: Development of Outdoor Program Room	4,800	SF	\$ 75.00	\$ 360,000.00
				\$ 3,182,750.00
		General Conditions	15.00%	\$ 477,412.50
		Subtotal		\$ 3,660,162.50
		Contractor Overhead & Profit	15.00%	\$ 549,024.38
		Subtotal		\$ 4,209,186.88
		Contractor Payment & Performance Bond	1.50%	\$ 63,137.80
		Subtotal		\$ 4,272,324.68
		Design Contingency	10.00%	\$ 427,232.47
		Construction Cost Total		\$ 4,699,557.15
Soft Costs (design fees, planning permits, financing, legal fees, etc.)			10.00%	\$ 469,955.71
Reimbursable Expenses (printing, supplies, travel expenses, etc.)	1	AL	\$10,000.00	\$ 10,000.00
Owner Contingency			10.00%	\$ 83,983.68
Furnishings (new area only)	4,500	SF	\$30.00	\$ 135,000.00
Furnishings (existing area only)	5,700	SF	\$30.00	\$ 171,000.00
Interactive Exhibits	1	AL	\$10,000.00	\$ 10,000.00
TOTAL PROJECT ESTIMATE				\$ 5,579,496.54
OPTION B	PROJECT ESTIMATE RANGE	\$ 4,707,285.90	to	\$ 5,579,496.54
	<i>Building Addition: 1 Story</i>	<i>\$375.00</i>	<i>\$/SF</i>	<i>\$450.00</i>
	<i>Interior Renovation: Finish Upgrades</i>	<i>\$115.00</i>	<i>\$/SF</i>	<i>\$150.00</i>

DESIGN CONCEPT OPTION C

RENOVATED AREA
10,000 SF

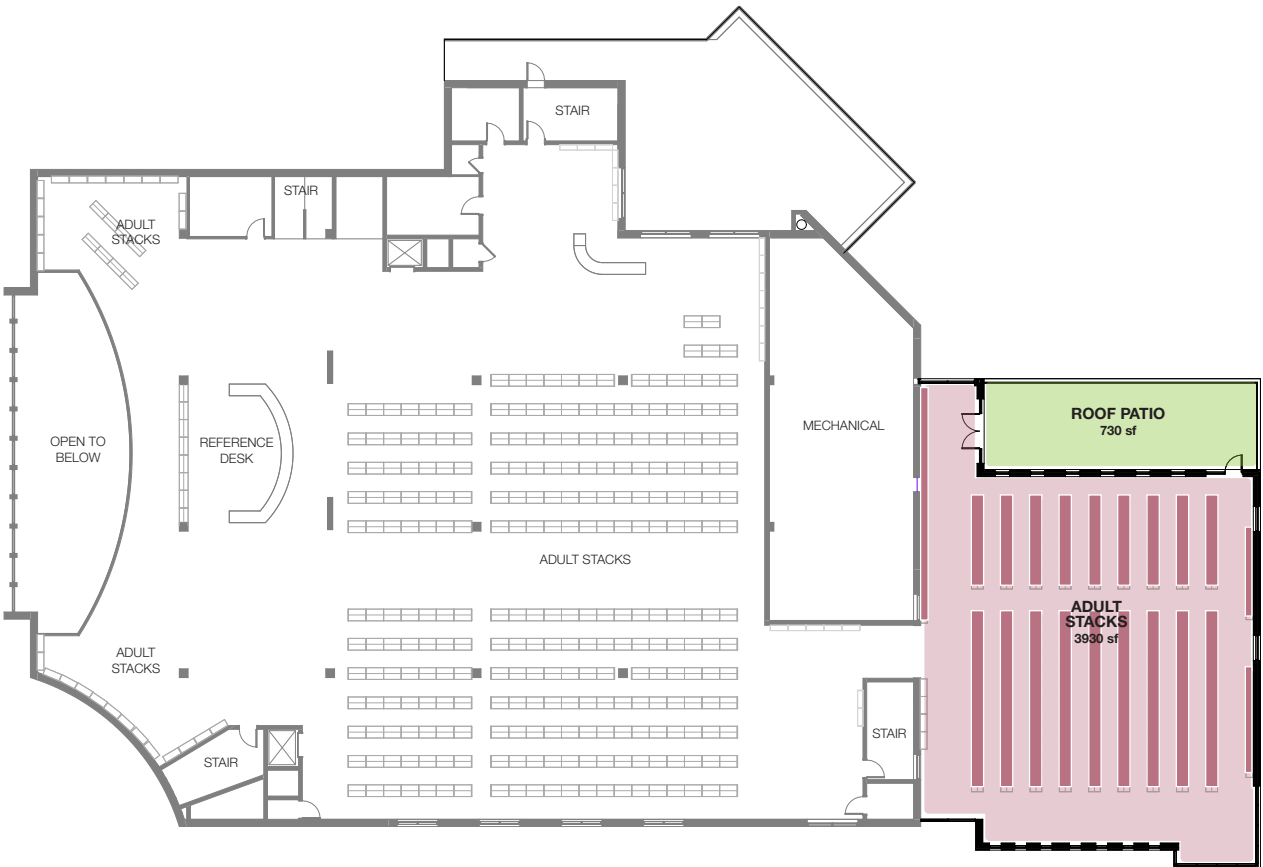
The design concept for the Elkhart Public Library envisions a transformative two-story addition, introducing approximately 8,500 square feet of enhanced library space, with a primary focus on enriching the Young People's Services (YPS). The main floor will become the vibrant heart of YPS, expanding into the existing primary adult collection area. This reconfiguration will allow for the creation of a dedicated interactive play area for toddlers and preschoolers, multiple tutoring and study spaces, a variety of seating options, and a welcoming room for teens complete with secure storage for activities, games, and supplies. Family restrooms will be conveniently located.

The second floor will house a significant portion of the adult collection, freeing up space on the main floor for YPS enhancements. Patrons will enjoy access to a beautifully designed rooftop patio, providing a serene environment for reading and

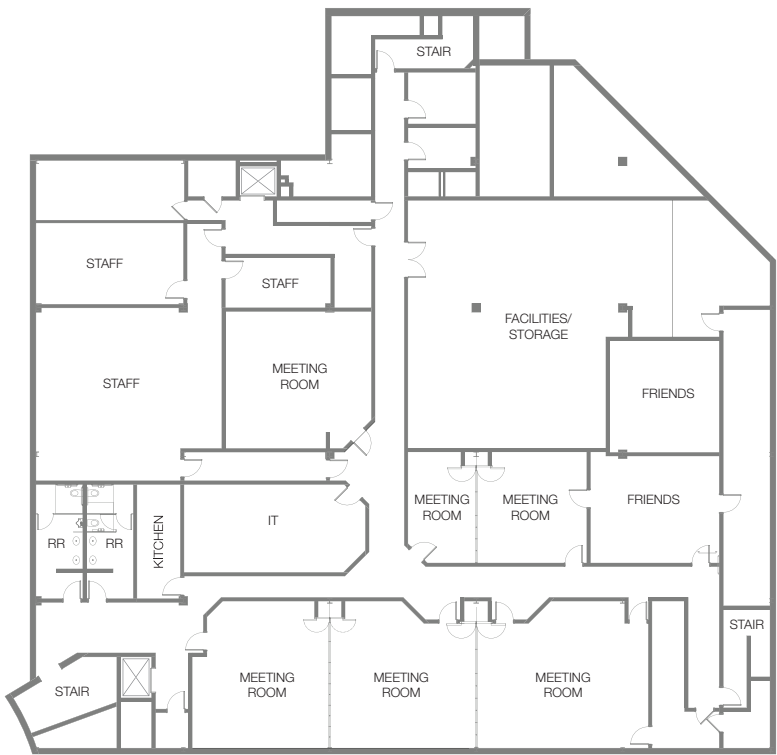
relaxation with views of the outdoor programming space. An adjacent rooftop area will serve as a bandstand for outdoor concerts, enriching the library's cultural offerings and community events. The existing lower-level programming space will be repurposed for dedicated adult programming or converted to support other essential library services, adapting to the evolving needs of the community.

This comprehensive design not only addresses the current priority needs and wish list items identified by YPS staff and the community but also ensures a dynamic, future-proofed space that will grow with the library's patrons, offering a blend of educational, recreational, and cultural opportunities for all ages.

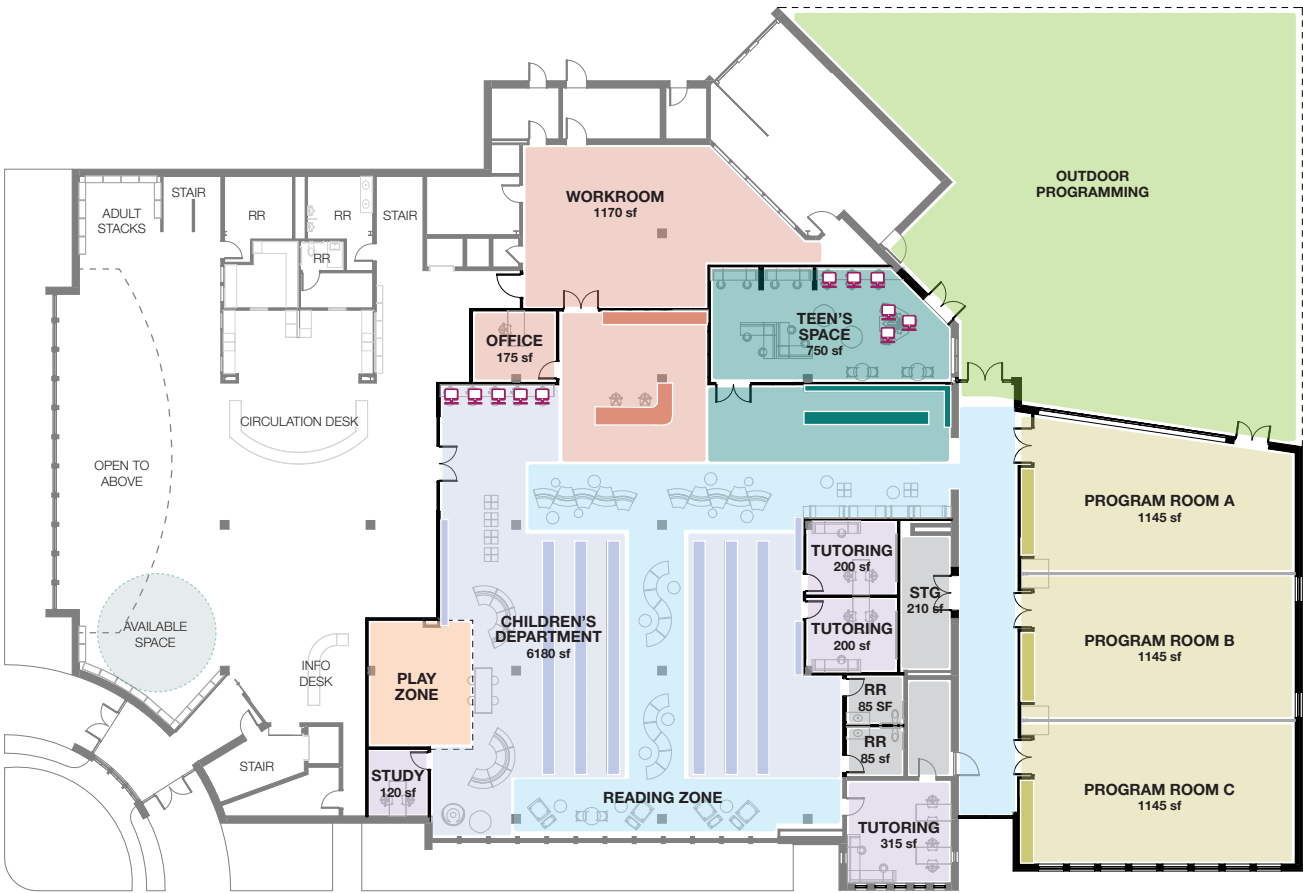
Estimated Cost Range
\$8,300,000 - \$9,900,000



UPPER FLOOR 



LOWER FLOOR 



MAIN FLOOR 



INTERIOR DESIGN CONCEPT RENDERING

CONCEPTUAL MASSING

TWO-STORY ADDITION

Concept

The primary purpose is to visualize the scale and spatial relationship of the proposed addition to the existing library and its surrounding environment. By focusing on the overall form and volume, these images help stakeholders understand how the new structure will fit within the context of the site. This approach allows for exploring design possibilities without being constrained by specifics. It facilitates discussions about the building's impact on sunlight, shadows, and sightlines, ensuring the addition

complements the existing structure and its environment, and meets zoning and regulatory requirements, setting the stage for detailed design in subsequent phases.

The two-story addition seamlessly integrates with the existing library structure with its aligned floor lines. This design allows for the creation of taller ceilings on both levels, enhancing spatial dynamics. The addition's rooftop presents an opportunity to develop a patio space, offering a unique area for outdoor activities and gatherings.



View of Outdoor Program Area



2nd Street View

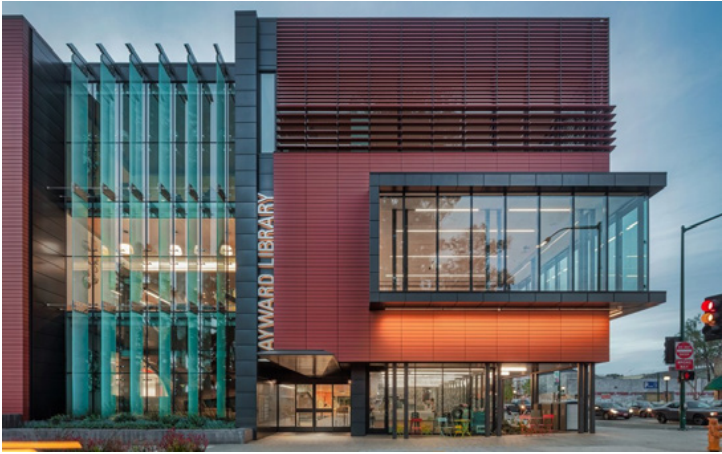
EXTERIOR PRECEDENTS



West Lafayette Public Library | krM Architecture



Greenpoint Library and Environmental Education Center | Marble Fairbanks Architects



Hayward Library & Community Learning Center | Noll & Tam Architects



West Lafayette Public Library | krM Architecture



Amos Memorial Public Library | krM Architecture

COST ESTIMATE

Purpose and Limitation of the Cost Estimates

These cost estimates are intended to provide magnitude of costs to assist the Elkhart Public Library in their assessment of the viability for various project options. The estimates were developed using a cost per square foot method in 2024 U.S. dollars.

Project owners and contractors face threats of higher prices and longer lead times at the outset of projects, but also uncertainty regarding pricing and scheduling impacts throughout construction. We will be proactive in our attempts to anticipate these issues and make decisions in the best interest of the project. However, we acknowledge that there are many factors outside of our control, in this regard. As EPL narrows their choices and priorities, each potential project option should be evaluated in more detail to validate the cost estimates.

As part of this plan, various design and reconfiguration ideas were considered. These preliminary concepts are intended to identify the potential changes in enough detail to establish general project scope and an estimate of the potential cost impact. While some details have not been fully resolved, as part of this plan, the issues have been identified and included in the estimate for future development during a design phase.

Standard Level of Renovation

In areas proposed to be renovated, the general standard is to bring an area to a “like new” condition. Within existing buildings, it is common for some constraints to hamper a totally new condition. However, in most cases ‘like new’ is achievable and provides a satisfactory education and overall building environment.

Building Code Compliance

Building codes have evolved significantly over the last 50 years and have become increasingly strict in their requirements for the life safety of occupants. If a building is constructed properly to meet the then current building code, there is no requirement that the building is to be improved to current building codes. The exception is that if the local fire or building inspection officials deem that a situation is unsafe, they may require an owner to make specified upgrades.

If a building is renovated, it is required to meet varying levels of building codes depending on the work being completed. The International Existing Building Code classifies remodeling in one of three categories. This code becomes the baseline of minimal standard for remodeling or renovation of existing buildings. This is the standard to which this feasibility study is intended to be held.

ELKHART PUBLIC LIBRARY Downtown Branch - YPS Area					
FEASIBILITY STUDY COST ESTIMATE PREPARED 6/18/2024				OPTION C	
SCOPE DESCRIPTION	QNTY	UNIT	UNIT COST	TOTAL	
Building Addition: 2 Story	8,500	SF	\$ 450.00	\$ 3,825,000.00	
Interior Renovation: Reconfiguration + Finish Upgrades	10,000	SF	\$ 150.00	\$ 1,500,000.00	
Exterior Improvement: Rooftop Patio	800	SF	\$ 75.00	\$ 60,000.00	
Exterior Improvement: Window Replacement (Existing 1st floor YPS)	450	SF	\$ 95.00	\$ 42,750.00	
Sitework: Excavation and Grading for New Construction	10,400	SF	\$ 25.00	\$ 260,000.00	
Sitework: Miscellaneous Walks, Stoops, and Lawn	1	AL	\$ 80,000.00	\$ 80,000.00	
Sitework: Development of Outdoor Program Room	4,800	SF	\$ 75.00	\$ 360,000.00	
				\$ 5,687,750.00	
General Conditions			15.00%	\$ 853,162.50	
Subtotal				\$ 6,540,912.50	
Contractor Overhead & Profit			15.00%	\$ 981,136.88	
Subtotal				\$ 7,522,049.38	
Contractor Payment & Performance Bond			1.50%	\$ 112,830.74	
Subtotal				\$ 7,634,880.12	
Design Contingency			10.00%	\$ 763,488.01	
Construction Cost Total				\$ 8,398,368.13	
Soft Costs (design fees, planning permits, financing, legal fees, etc.)			10.00%	\$ 839,836.81	
Reimbursable Expenses (printing, supplies, travel expenses, etc.)			1 AL	\$10,000.00	\$ 10,000.00
Owner Contingency				10.00%	\$ 83,983.68
Furnishings (new area only)			8,500 SF	\$30.00	\$ 255,000.00
Furnishings (existing area only)			10,000 SF	\$30.00	\$ 300,000.00
Interactive Exhibits			1 AL	\$20,000.00	\$ 20,000.00
TOTAL PROJECT ESTIMATE				\$ 9,907,188.62	
OPTION C PROJECT ESTIMATE RANGE \$		8,288,681.96	to	\$ 9,907,188.62	
Building Addition: 2 Story		\$375.00	/SF	\$450.00	
Interior Renovation: Finish Upgrades		\$115.00	/SF	\$150.00	

APPENDIX



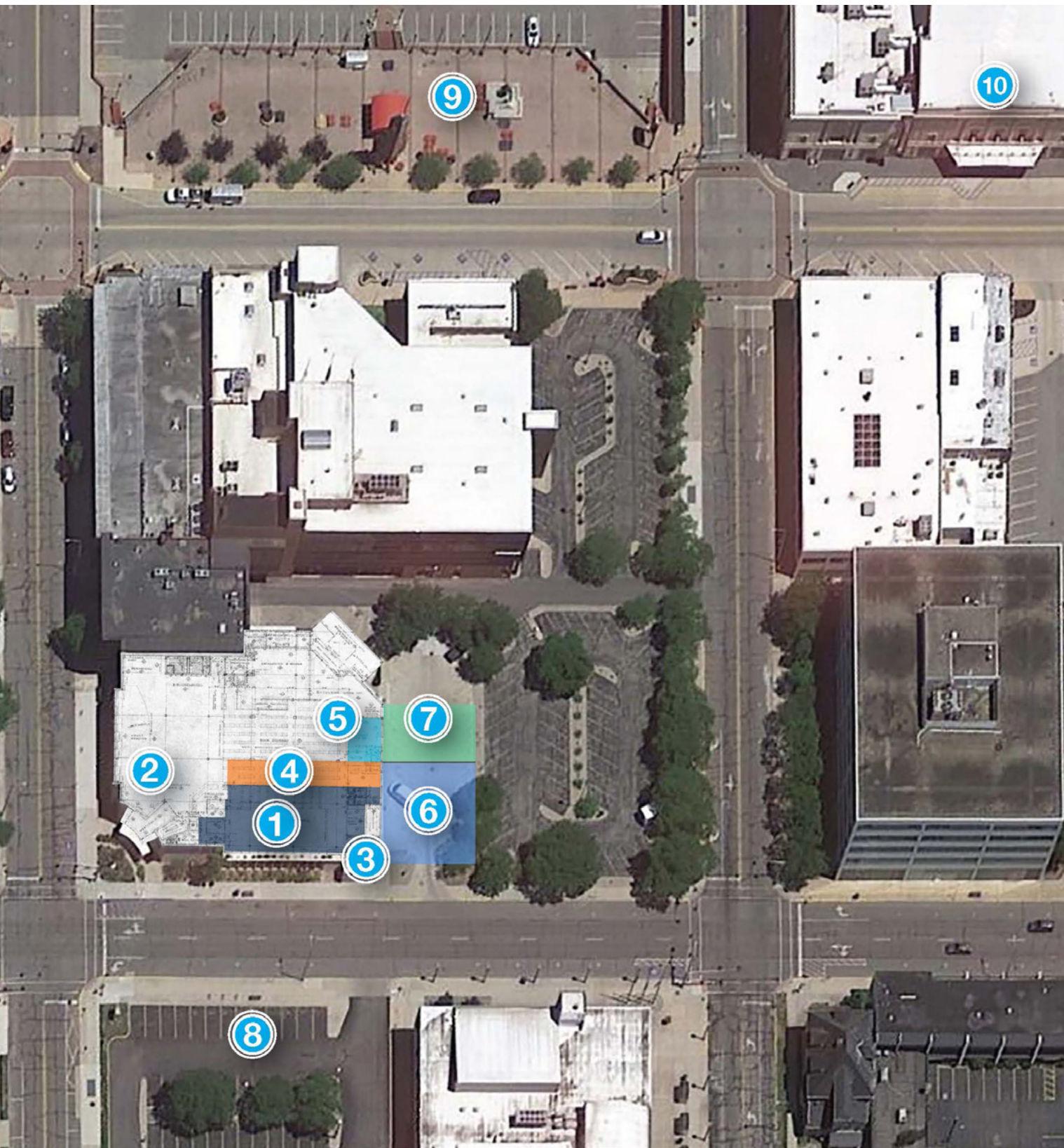
Space Summary

Originally Opened in 1963
Approximately 46,500 sf
Lower Level - 13,500 sf
First Level - 18,000 sf
Second Level - 15,000 sf

Three-Dimensional Space Capture

The entire interior and exterior of Elkhart Public Library was documented during this study with the use of Matterport technology. krM Architecture used the Matterport to create a model of the building that allows a user to navigate throughout the spaces three-dimensionally and is an accurate tool used to explore the entire building virtually.

Early Considerations



1. Existing Young People's Area
A potential renovation could incorporate intentional play spaces, collaborative areas, and multiple-use programming spaces designed for young people. Improve sightlines and staff working areas for efficiency and increased storage.

2. Existing Teen Area
The current teen area's placement near the main entrance poses challenges related to noise disruption for other library functions. Additionally, the visibility of teens in this high-traffic area may make them feel 'on display,' hindering engagement. There is an opportunity to re-envision and incorporate this area as part of the adult service area after a new teen area is created.

3. Location of Ted Drake Mural
Reclaiming the former entrance for the Ted Drake Mural within the Children's Area presents a unique opportunity to restore its prominence. A strategic relocation of the staff workroom is crucial to achieving this, allowing the mural to become a central and welcoming focal point for young visitors. Innovative display solutions, such as adjustable lighting and interactive features, can enhance the mural's visibility and engagement. By creating flexible spaces around the mural for programming and workshops, the redesigned area would transform into a dynamic hub of learning and creativity in the heart of the Children's Area.

4. Potential YPS Interior Expansion
We could explore expansion of YPS into the adult services area. Incorporate displaced collection into other areas of the building.

5. Potential New Teen Space
Designing a teen area in a public library is crucial for creating a positive, welcoming, and inclusive environment. A thoughtful redesign should prioritize acoustics, incorporate discreet spaces for privacy, and allow for supervision. Adaptable spaces and furnishings can accommodate a variety of activities, fostering a dynamic environment that meets the diverse needs of teenage patrons. By infusing vibrant elements, the redesigned teen area can enhance the overall library experience, making it an exciting and inviting space for young visitors.

6. Potential Building Expansion
This incorporates the longer-term strategic goals of the library when considering the size of a potential library expansion. Economies of scale and simplicity of building

form can have a significant impact on the cost per square foot of any expansion. Any expansion should seamlessly integrate with the urban fabric and be respectful of the architectural heritage of the existing library.

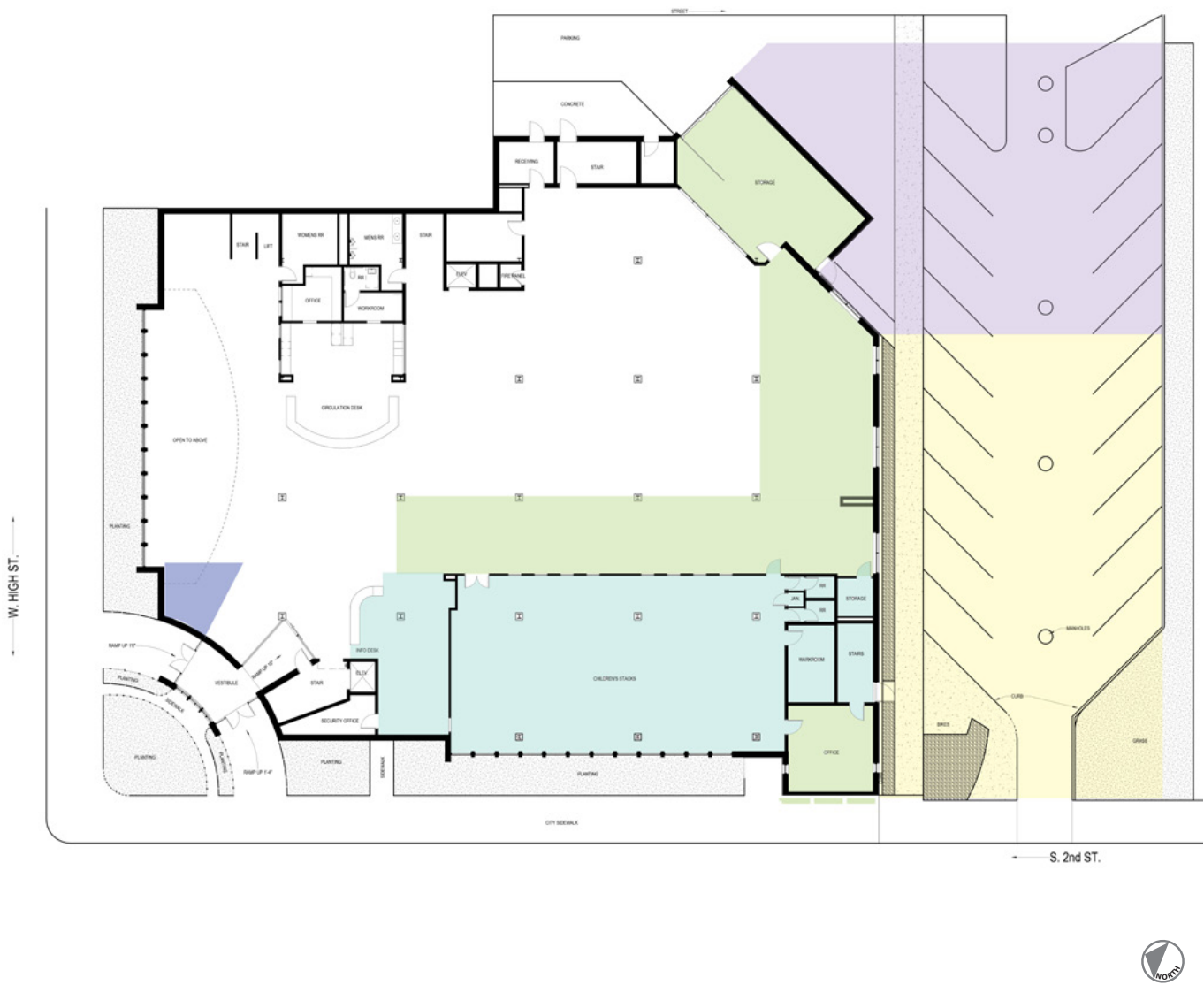
7. Potential Outdoor Programming
Outdoor areas can foster social interaction and collaboration. Thoughtfully designed outdoor program space can help promote holistic education, cultural, and community engagement that is an extension of the vibrant civic spaces located throughout downtown Elkhart – the Civic Plaza and the Lerner Theater, to name a couple.

8. Potential Reciprocal Parking Agreement and/or Future Downtown Redevelopment
With the future relocation of the Elkhart County Superior Court, is there potential for a reciprocal parking agreement with the City? Is there potential to be a catalyst or a partner in the future redevelopment of the city block? You may likely know the answer to these questions, but that comes up in our initial ideation.

9. Elkhart Civic Plaza
Leveraging the Elkhart Civic Plaza as a key civic space, the library can significantly extend its impact by exploring innovative ways to engage with the community. Setting up a pop-up library at the Civic Plaza is an excellent strategy to bring library services and resources directly to community events. By strategically integrating library services into the Elkhart Civic Plaza, the library can reach residents where they naturally gather and fostering a sense of connectivity and accessibility beyond traditional library walls.

10. The Lerner Theater
Building strong cultural connections with partners like the Lerner Theater involves a strategic approach to programming and resource allocation at the library. Ways in which the library can expand events and experiences at the Lerner Theater and other cultural community partners, creating deep and impactful cultural experiences that extend beyond their normal reach might include collaborative programming, pre-event workshops and discussions, multi-location exhibit or themed series or seasons. By intertwining the programming and resources of the library with the offerings of cultural partners, a community can experience a more cohesive and immersive cultural tapestry, fostering a deeper appreciation for the arts and creating lasting connections within the community.

Initial Site Discovery and Assessment



Exterior Discovery and Assessment

- Great daylight on north and west facades
- Beautiful limestone and continuity of design
- Street presence and iconic style in downtown setting

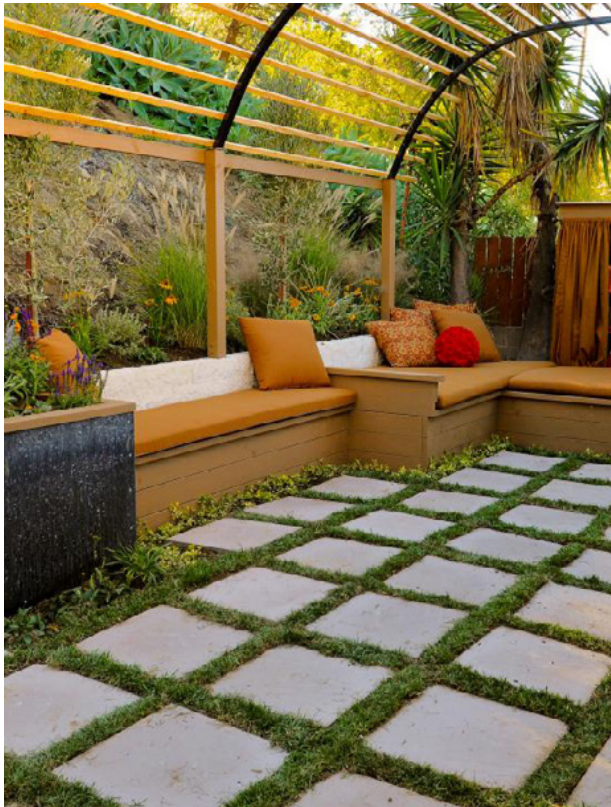
Improvement or Maintenance Observation

- Check seals on storefront and curtain wall.
- Check sealant condition and replace it around storefront, doors, etc.
- Check limestone mortar joints and repair as needed.
- Limestone cleaning is needed.
- Southwest corner limestone panel replacement needed.
- Landscaping needs updated with variety and new plantings.
- Replace infill on southwest corner (old entrance) with complimentary materials and design.

01.24.24

Core Team Kick Off Meeting

Goals: Establish timeline and scope of feasibility study. Provide primary individuals time to describe the current condition of the library and create lists of priority and wish list items.



Priorities

- More enclosed and welcoming teen area
- Children’s interactive/ play area- near the desk
- Improve service desk in children’s area to include storage
- Integration of computer stations within the YPS area
- Family restrooms
- Improved staff office and work space

Wish List

- Programming area (STEAM Exploration Area from Carmel Library)
- Incorporate tutor service area into the main floor YPS area
- A wider variety of seating (nooks, quiet reading spaces, etc.)
- Stroller parking and soft-seating near restrooms and/or near entrance (St. Joe Library).
- Distinct activity spaces for various age groups
- One desk that is accessible to children’s and teen’s area.
- Teen Area to include storage for activities, games, and supplies.
- Outdoor programming space for YPS & potential other departments and/or community members - rooftop potential

YPS Staff Input Meeting

Goal: Serve as an initial brainstorming exercise with the Young People’s Services members to start the conversation to establish further project wants, needs, and wish list items.

Three different prompts were proposed, with these being the key takeaways :

Prompt #1: What are the things you wish other departments would know?

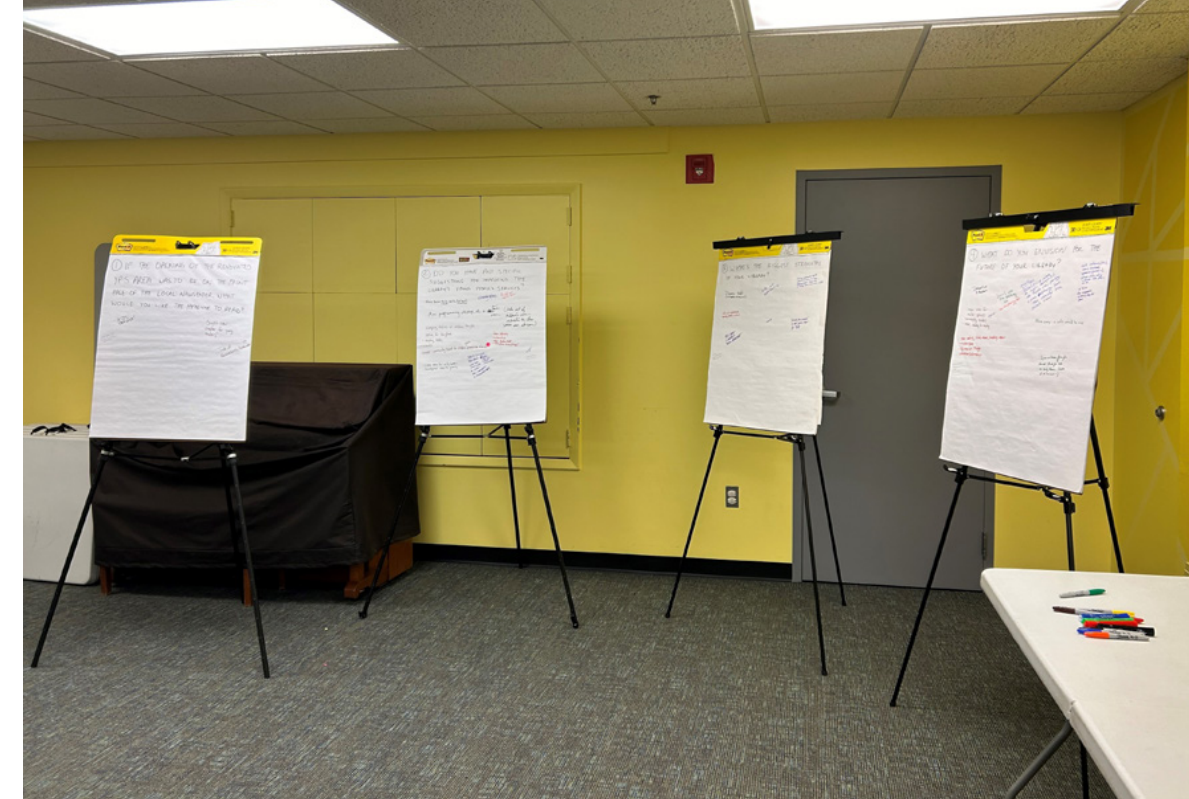
- Children are important and have feelings
- Children will have questions that need answered
- Wish they could see the joy of a child learning to read
- Wish teens were more welcome
- Wish they understood how hard some people have it
- What activities are going on and where
- Know the rules – age of kids, food and drink policies
- All of what we do is learning and early literacy is important and vital
- Not all families have the same resources – there are many different needs
- What we do is hard work, fun, but still hard work
- Teens have feelings too and should be welcomed here
- While some programs might seem annoying, they bring a ton of joy
- Come talk to one of us if you don’t like something that we’re doing

Prompt #2: If we do it right, it’ll look like...

- colorful rooms
- maker-space/ computer room/ game room
- variety of comfortable seating for studying, reading, and relaxing
- larger areas for activities and programs
- prep/ staff work room
- small group/tutoring rooms
- small auditorium stage
- kitchen for cooking programs/ art sinks
- garden and outdoor spaces
- better strategies for displaying growing collections
- more storage
- teen ownership of spaces
- more art displayed
- better staff office organization
- line of sight throughout
- space for presenters

Prompt #3: My best day was...

- processing new books
- story time and play with good attendance
- helping children find a new book
- fish tank conversations and intrigue
- make it/take it table crafts
- painting classes/ lego programs displayed
- parking spot open
- coworkers in good moods
- having room for new books



Community and Staff Visioning Workshops

03.21.24

Imagery Survey

Goal: Provide patrons with a quick way to compare different design concepts and express what they like or dislike.

YES

- clear gravitation towards photos with people interacting with the spaces
- large rooms broken up by program and activities, not just furniture
- fun, playful colors
- a kid's spirit
- more programming and learning opportunities for kids and teens (maker's space, library of things, study rooms, eating space, etc.)
- nooks and more seating opportunities in general
- rooms full of character, not just used for “show”
- natural light and more connection to the outdoors



NO

- colors and lighting that makes spaces feel “cold”
- corporate looking spaces
- darker, minimal rooms
- large rooms packed with unused furniture
- large gathering stairs
- excessive amounts of hard tables and chairs
- impractical and not accessible display
- white or neutral walls



Color & Texture

yes

Warm & Bright



Colorful



Playful



Sensory

no

Corporate Feel



Cool Tones



Dark & Muted



Programming

yes

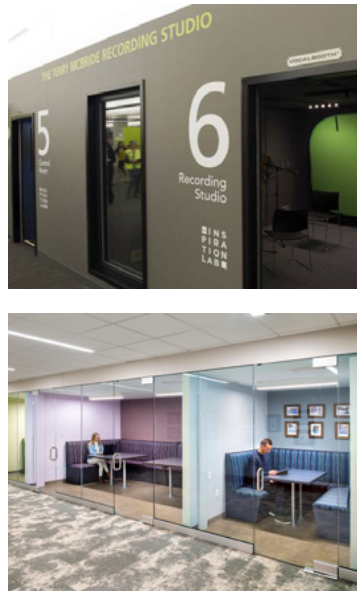
no

Studios

Makerspace



Study Rooms



Community Kitchen



Storytime



Over-crowded



Classroom Function



Undefined Spaces



Seating

yes

Reading Nooks

Layered Space



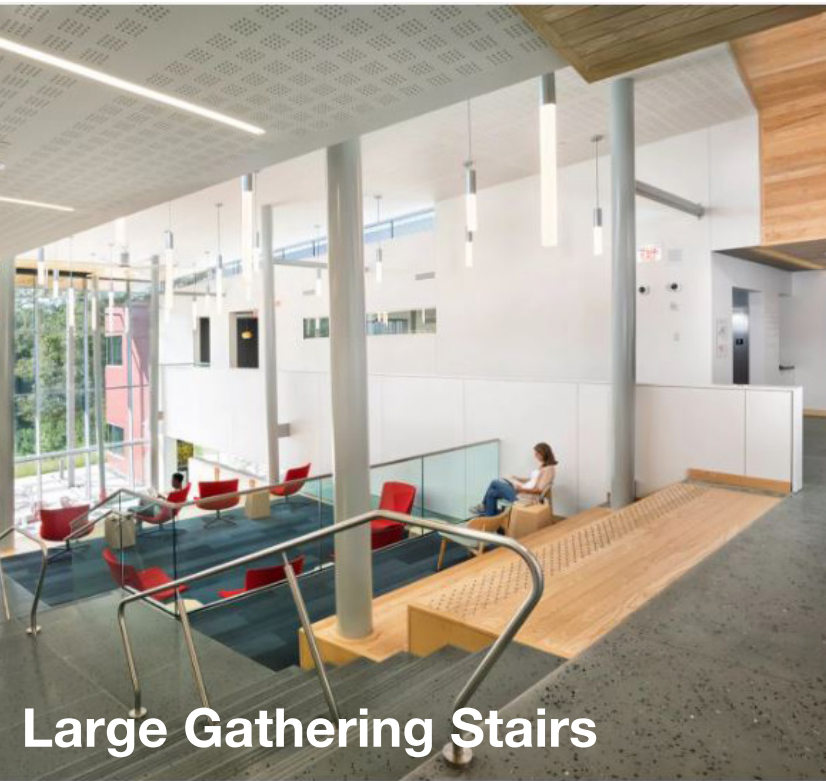
Variety of Styles



Fun Shapes

no

Too Modern or Mature



Display

yes



Low Shelving

Fun Shapes & Colors



no



Staged Shelving



Inaccessible

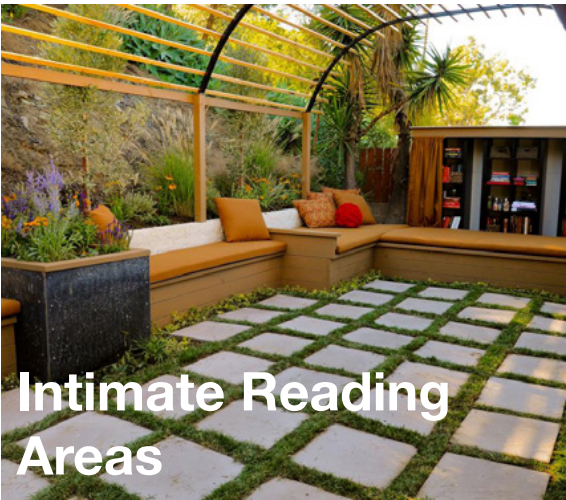


Site Interaction

yes



Movable Furniture



Intimate Reading Areas



Small Garden



no

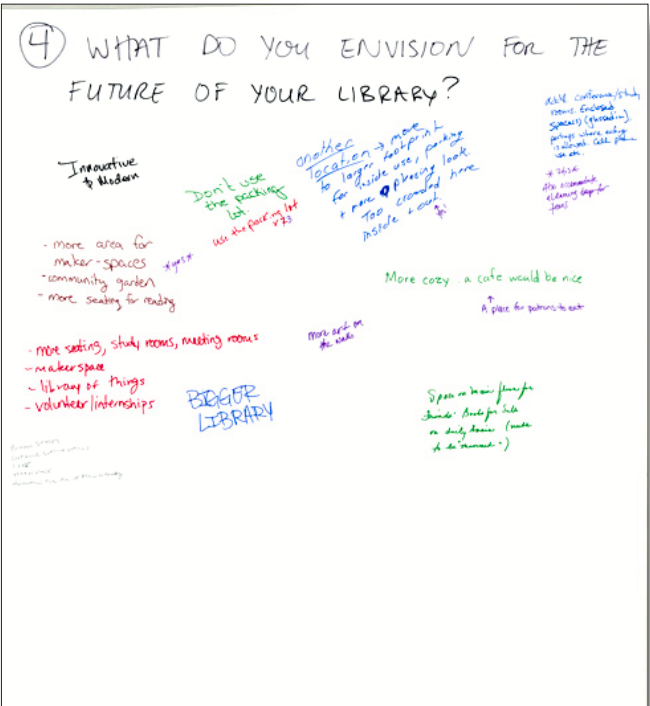
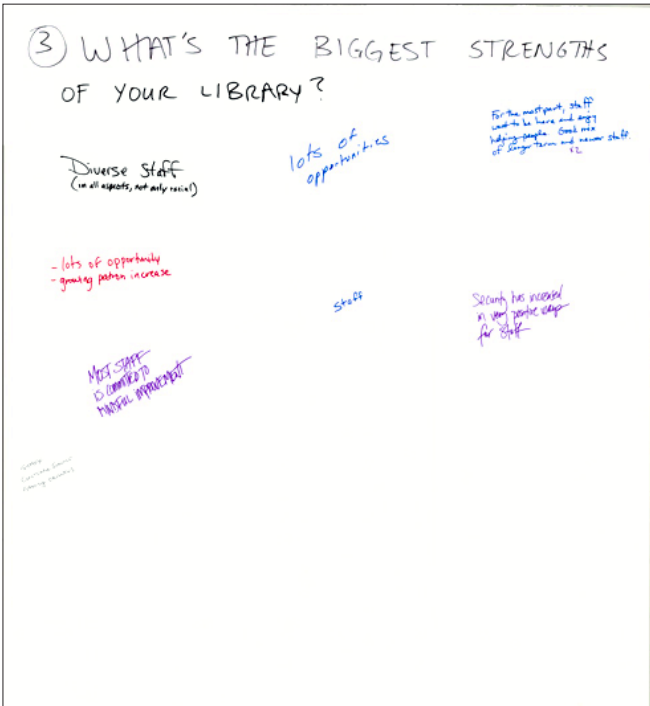
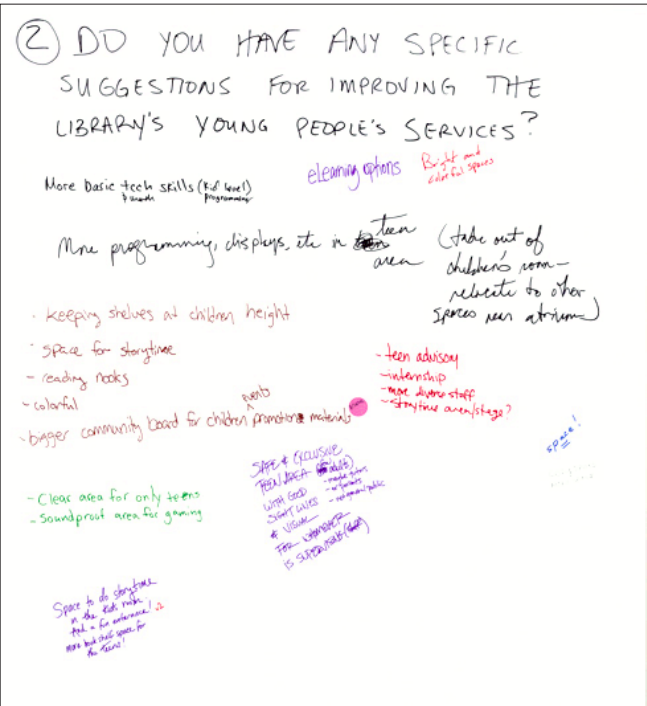
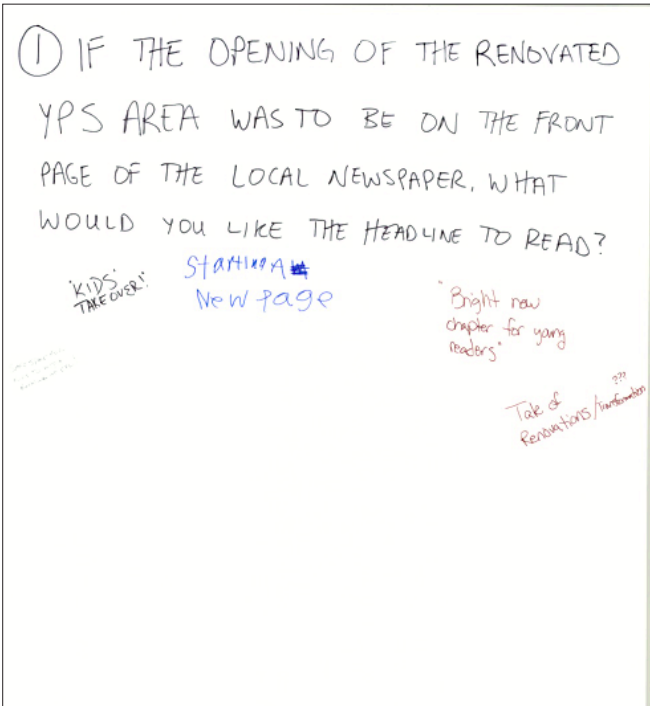
Hard to Maintain



Serves No Purpose

Writing Prompt Response

Goal: Provide patrons with an opportunity to express further needs, wants, and concerns in a less structured manner.



- ① “KIDS Takeover!”

“Bright New Chapter for Young Readers”
- ② Exclusive teen area with more opportunities

Space for story time

Bright & colorful environment

Board for promotion of community events & clubs

SPACE!

- ③ The staff!

Lots of opportunity for growth
- ④ BIGGER LIBRARY

More programmed space (ex: maker-space, community garden, reading nooks, study rooms, etc,)

Better parking

Library of things

Cafe - Place to eat

Community Discovery

Goal: Another activity to identify what the community and staff would add to the library if it was their choice.

COMMUNITY DISCOVERY
ELKHART PUBLIC LIBRARY

Additional Questions

1. Describe how a newly renovated Young People's Services area would feel in 3 words:
Inviting, Interactive, Lively

2. If you could only choose one thing to change about the current YPS area what would it be?
bigger play area

3. Your favorite thing about the current YPS area is:
work stations for kids

krM Architecture is working with the Elkhart Public Library to reimagine the Young People's Services area of the downtown library. As the patrons and users of the Library you have the opportunity to provide insight and information that will impact the outcome of the project. Please provide feedback below and we will work as a group to discuss the ideas. Feel free to use the

Imagine it is 3 years in the future and the Young People's Services area has been renovated. When you first visit the reimagined YPS area what do you experience that gets you the most excited?

more activities for STEM students + better seating for kids to want to stay longer.
better organization of books to be easier for kids to find.

COMMUNITY DISCOVERY
ELKHART PUBLIC LIBRARY

Additional Questions

1. Describe how a newly renovated Young People's Services area would feel in 3 words:
Inviting, Clean, Cool, Fun

2. If you could only choose one thing to change about the current YPS area what would it be?
few open air bookshelves to show more books

3. Your favorite thing about the current YPS area is:
The organization

krM Architecture is working with the Elkhart Public Library to reimagine the Young People's Services area of the downtown library. As the patrons and users of the Library you have the opportunity to provide insight and information that will impact the outcome of the project. Please provide feedback below and we will work as a group to discuss the ideas. Feel free to use the

Imagine it is 3 years in the future and the Young People's Services area has been renovated. When you first visit the reimagined YPS area what do you experience that gets you the most excited?

It will be open and bright. Things will feel fresh and exciting, even more so my boys will continue to love to come (as they already do). My boys will be easily able to find books at their level and have room to sit somewhere comfortable with a good book.

COMMUNITY DISCOVERY
ELKHART PUBLIC LIBRARY

Additional Questions

1. Describe how a newly renovated Young People's Services area would feel in 3 words:
Vibrant, Spacious, Welcoming

2. If you could only choose one thing to change about the current YPS area what would it be?
more tables/seating area for parents

3. Your favorite thing about the current YPS area is:
Activity area

krM Architecture is working with the Elkhart Public Library to reimagine the Young People's Services area of the downtown library. As the patrons and users of the Library you have the opportunity to provide insight and information that will impact the outcome of the project. Please provide feedback below and we will work as a group to discuss the ideas. Feel free to use the

Imagine it is 3 years in the future and the Young People's Services area has been renovated. When you first visit the reimagined YPS area what do you experience that gets you the most excited?

- more tables or seating for parents to sit and read w/ children or work on homework etc.
- book/fiction characters integrated into environment
- higher bookshelves to allow for more space
- Optional: Bigger fish tank! :)

Big Takeaways

A welcoming environment flooded with bright colors and natural light. The library would be hosting hands-on activities while others would be easily finding their books and sitting in comfortable furniture.

① A larger, lively space that is welcoming, colorful, and easy to navigate.

② Improved staff workstations, better display of materials, larger activity areas, places for parents to read to their kids, add a sensory station, updated furniture and more seating options

③ Selection of material, activity area, current staff

COMMUNITY DISCOVERY
ELKHART PUBLIC LIBRARY

Additional Questions

1. Describe how a newly renovated Young People's Services area would feel in 3 words:
Fun, Warm, Inviting

2. If you could only choose one thing to change about the current YPS area what would it be?
South coming to the library to have fun and read books

3. Your favorite thing about the current YPS area is:
The staff here

krM Architecture is working with the Elkhart Public Library to reimagine the Young People's Services area of the downtown library. As the patrons and users of the Library you have the opportunity to provide insight and information that will impact the outcome of the project. Please provide feedback below and we will work as a group to discuss the ideas. Feel free to use the

Imagine it is 3 years in the future and the Young People's Services area has been renovated. When you first visit the reimagined YPS area what do you experience that gets you the most excited?

modern indoor furniture, natural lighting, seating, updated furniture

COMMUNITY DISCOVERY
ELKHART PUBLIC LIBRARY

Additional Questions

1. Describe how a newly renovated Young People's Services area would feel in 3 words:
Fun, Warm, Inviting

2. If you could only choose one thing to change about the current YPS area what would it be?
South coming to the library to have fun and read books

3. Your favorite thing about the current YPS area is:
The staff here

krM Architecture is working with the Elkhart Public Library to reimagine the Young People's Services area of the downtown library. As the patrons and users of the Library you have the opportunity to provide insight and information that will impact the outcome of the project. Please provide feedback below and we will work as a group to discuss the ideas. Feel free to use the

Imagine it is 3 years in the future and the Young People's Services area has been renovated. When you first visit the reimagined YPS area what do you experience that gets you the most excited?

South coming to the library to have fun and read books

COMMUNITY DISCOVERY
ELKHART PUBLIC LIBRARY

Additional Questions

1. Describe how a newly renovated Young People's Services area would feel in 3 words:
Fun, Warm, Inviting

2. If you could only choose one thing to change about the current YPS area what would it be?
South coming to the library to have fun and read books

3. Your favorite thing about the current YPS area is:
The staff here

krM Architecture is working with the Elkhart Public Library to reimagine the Young People's Services area of the downtown library. As the patrons and users of the Library you have the opportunity to provide insight and information that will impact the outcome of the project. Please provide feedback below and we will work as a group to discuss the ideas. Feel free to use the

Imagine it is 3 years in the future and the Young People's Services area has been renovated. When you first visit the reimagined YPS area what do you experience that gets you the most excited?

An inviting area with various random experiences for all the little kids.

COMMUNITY DISCOVERY
ELKHART PUBLIC LIBRARY

Additional Questions

1. Describe how a newly renovated Young People's Services area would feel in 3 words:
Fun, Warm, Inviting

2. If you could only choose one thing to change about the current YPS area what would it be?
South coming to the library to have fun and read books

3. Your favorite thing about the current YPS area is:
The staff here

krM Architecture is working with the Elkhart Public Library to reimagine the Young People's Services area of the downtown library. As the patrons and users of the Library you have the opportunity to provide insight and information that will impact the outcome of the project. Please provide feedback below and we will work as a group to discuss the ideas. Feel free to use the

Imagine it is 3 years in the future and the Young People's Services area has been renovated. When you first visit the reimagined YPS area what do you experience that gets you the most excited?

multiple areas to spend time, features a toy area, sensory bin area, reading nook with bean bags/day corner etc.

COMMUNITY DISCOVERY
ELKHART PUBLIC LIBRARY

Additional Questions

1. Describe how a newly renovated Young People's Services area would feel in 3 words:
Fun, Warm, Inviting

2. If you could only choose one thing to change about the current YPS area what would it be?
South coming to the library to have fun and read books

3. Your favorite thing about the current YPS area is:
The staff here

krM Architecture is working with the Elkhart Public Library to reimagine the Young People's Services area of the downtown library. As the patrons and users of the Library you have the opportunity to provide insight and information that will impact the outcome of the project. Please provide feedback below and we will work as a group to discuss the ideas. Feel free to use the

Imagine it is 3 years in the future and the Young People's Services area has been renovated. When you first visit the reimagined YPS area what do you experience that gets you the most excited?

multi on with nice light, books, display, comfy, cozy, warm, reading area, sensory bin area, reading nook with bean bags/day corner etc.

COMMUNITY DISCOVERY
ELKHART PUBLIC LIBRARY

Additional Questions

1. Describe how a newly renovated Young People's Services area would feel in 3 words:
Fun, Warm, Inviting

2. If you could only choose one thing to change about the current YPS area what would it be?
South coming to the library to have fun and read books

3. Your favorite thing about the current YPS area is:
The staff here

krM Architecture is working with the Elkhart Public Library to reimagine the Young People's Services area of the downtown library. As the patrons and users of the Library you have the opportunity to provide insight and information that will impact the outcome of the project. Please provide feedback below and we will work as a group to discuss the ideas. Feel free to use the

Imagine it is 3 years in the future and the Young People's Services area has been renovated. When you first visit the reimagined YPS area what do you experience that gets you the most excited?

multi on with nice light, books, display, comfy, cozy, warm, reading area, sensory bin area, reading nook with bean bags/day corner etc.

82 | EPL - YPS Feasibility Study

EPL - YPS Feasibility Study | 83

Seating Preference Poll

Goal: Identify what type of seating would better serve the patron’s wants and needs



HARD TABLES & CHAIRS



**INDEPENDENT
MOVABLE
FURNITURE**



**SMALL STORY TIME
BENCHES**



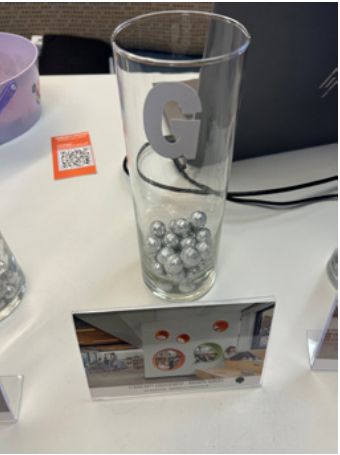
HARD TABLES & CHAIRS



BOOTHS



**PRIVATE STUDY
SPACE**



**INDIVIDUAL
READING NOOKS**



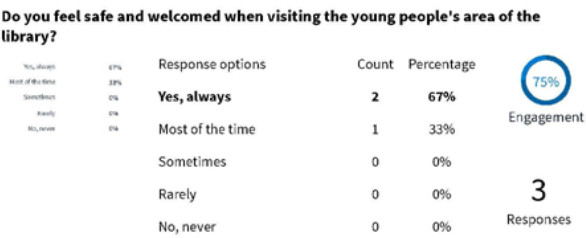
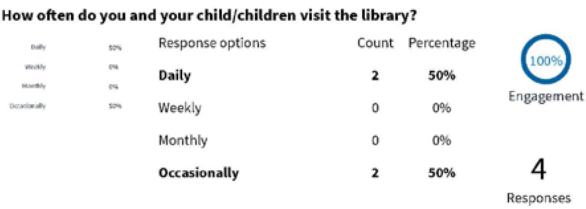
MODULAR SYSTEM



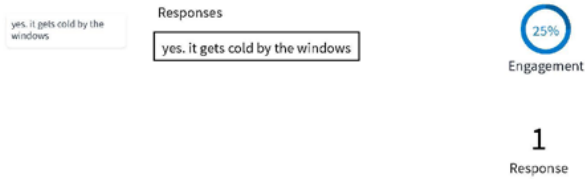
Big Takeaways

- 1 There should be a mixture of private reading/studying and group activity areas
- 2 Fun shapes & colors are important
- 3 Movable furniture is important but it is better if it is modular rather than independent
- 4 Very few were drawn to hard tables and chairs

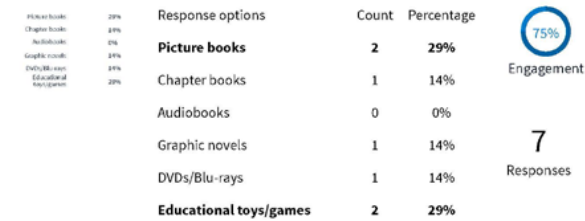
YPS Community Input Survey



Have you ever experienced any discomfort or challenges related to the physical environment (e.g., temperature, lighting, noise, smells, colors) while visiting the young people's area of the library? If yes, please describe.



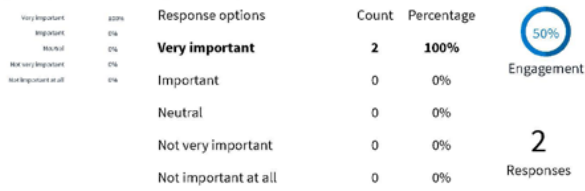
What types of materials do you usually borrow from the library for your child/children? (Select all that apply)



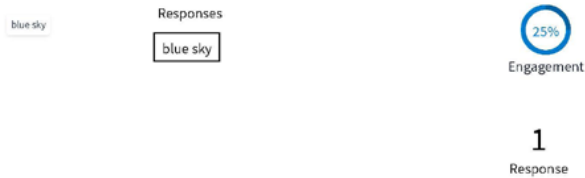
How do you feel about incorporating technology, such as tablets or interactive screens, into the young people's area of the library?



How important is it for the young people's area of the library to have designated quiet spaces for reading and study?



The sky is the limit! What would you be most excited to see in a newly renovated Young Peoples Services area?



What amenities would you like to see in the young people's area of the library? (Select all that apply)

Comfortable seating
Exploration Lab
Quiet reading
Computers with
Board games
Refreshment area
Soft play area w/...
Sensory wall
Interactive touch-...
Toddler-sized tabl...
Puppet theater fo...
Imaginative play
LEGO DUPLO
Storybook readin...

18%
9%
18%
0%
0%
0%
0%
9%
0%
9%
0%
0%
0%
18%

Response options	Count	Percentage
Comfortable seating	2	18%
Exploration Lab with self-directed STEM materials	1	9%
Quiet reading corners	2	18%
Computers with educational software	0	0%
Board games	1	9%
Refreshment area (snacks, drinks)	0	0%
Soft play area with foam blocks and cushions for safe exploration	1	9%
Sensory wall featuring textures, colors, and interactive elements	1	9%
Interactive touch-and-feel board books for early literacy engagement	0	0%
Toddler-sized tables and chairs for hands-on activities and crafts	1	9%
Puppet theater for imaginative play and storytelling	0	0%
Imaginative play corner with dress-up costumes, puppets, and play kitchen	0	0%
LEGO DUPLO building station for creative construction and fine motor skills	0	0%
Storybook reading nook with cozy seating and a selection of picture books	2	18%



11 Responses

What are the biggest strengths of your library?



What do you envision for the future of your library?



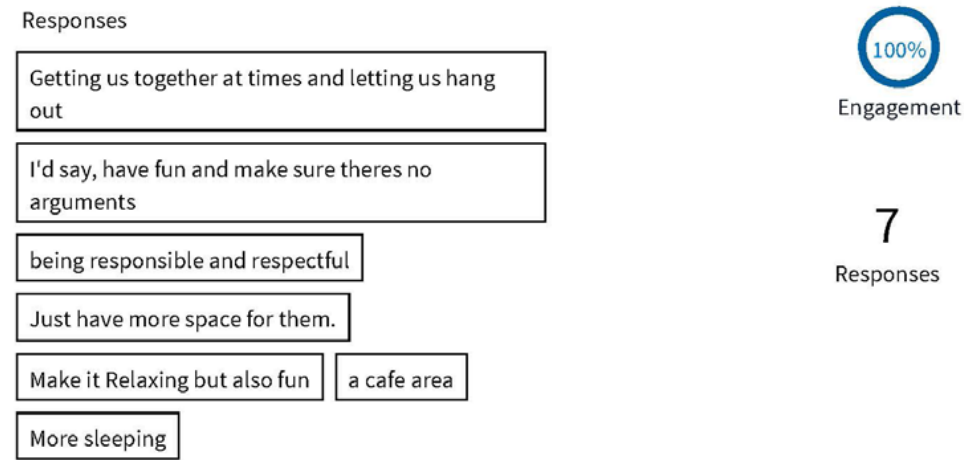
What do you envision for the future of Elkhart as a whole?



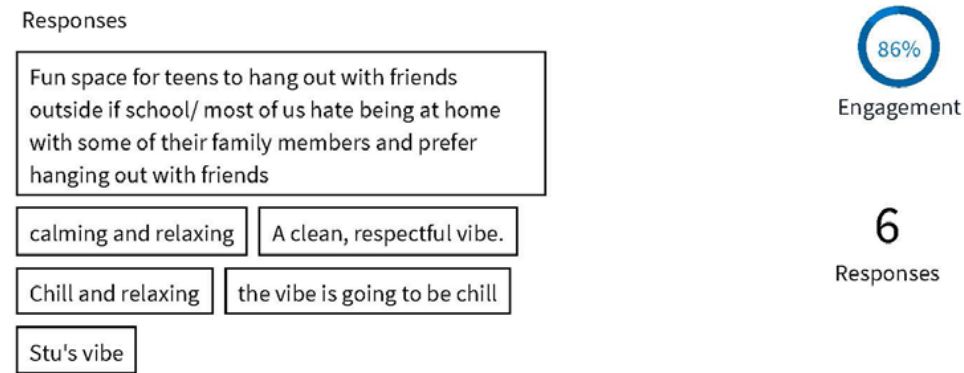
Teen Input Survey



What is the most important thing to accomplish in a new Teen Space at the Library?



If we get it right, what's the vibe?



What types of spaces would you like to see in an improved teen area of the library? (Select all that apply)

